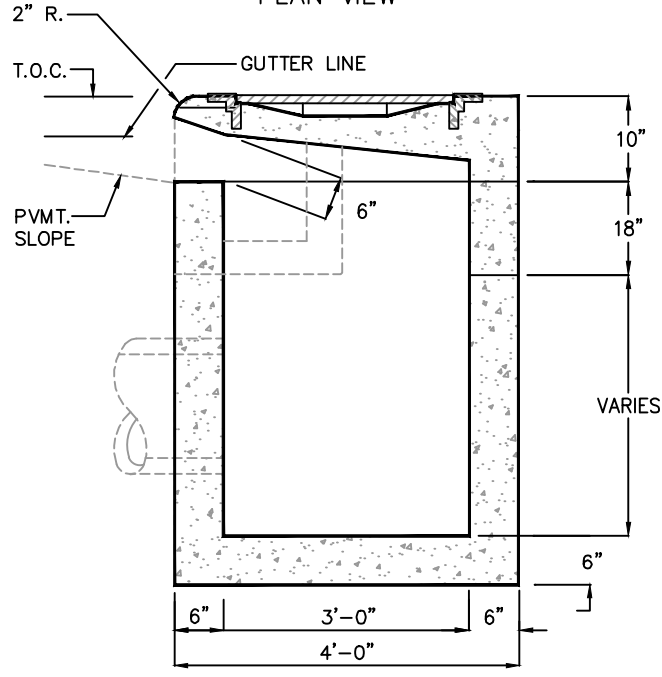
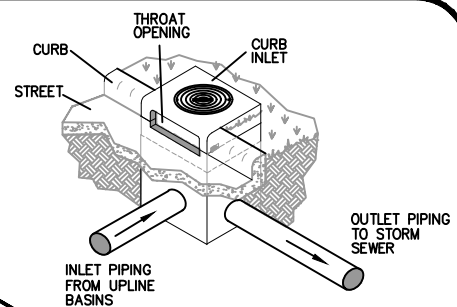


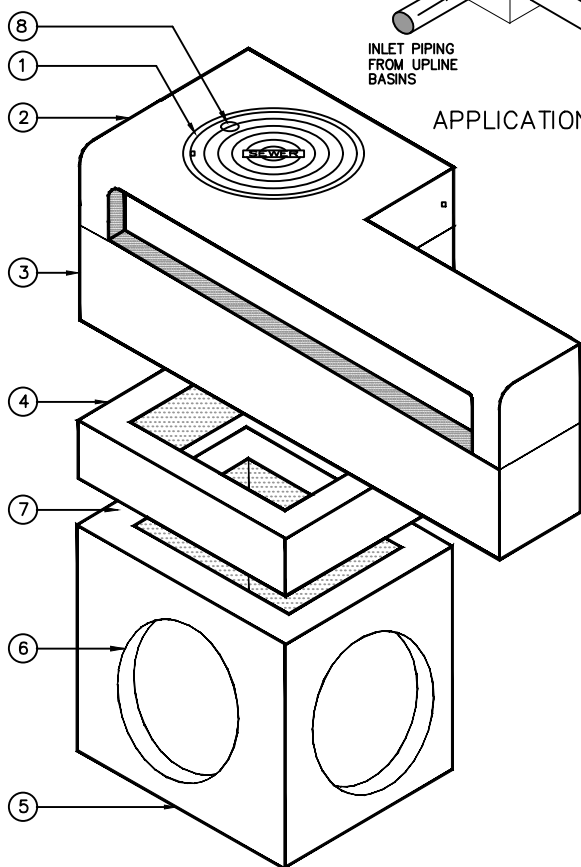
PLAN VIEW



ELEVATION SECTION VIEW



APPLICATION



ISOMETRIC



NAME PLATE

KEYED NOTES		
MARK	QTY	DESCRIPTION
1	1	CAST IRON FRAME & COVER AS REQ'D
2	1	TOP SECTION
3	1	CENTER SECTION
4	1	TRANSITION LID
5	1	BOTTOM SECTION
6	2	THINWALL KNOCKOUTS
7	1	GROUT OR RAMNEK BY CONTRACTOR
8	1	PRECAST CATCH BASIN PARK USA 888-611-PARK WWW.PARKUSA.COM MODEL THDC3510

NOTES:

1. SOME INLETS MAY USE COMBINATION OF TOP SECTION ONLY/TOP + CENTER SECTION/ OR TOP + CENTER + BOTTOM SECTION, DEPENDING ON INLET DEPTH.

© ParkUSA. ALL RIGHTS RESERVED.

SPECIFICATIONS

CONCRETE : CLASS I/II CONCRETE WITH OF DESIGN STRENGTH OF 4500 PSI AT 28 DAYS. UNIT IS OF MONOLITHIC CONSTRUCTION AT FLOOR AND FIRST STAGE OF WALL WITH SECTIONAL RISER TO REQUIRED DEPTH. RATED FOR H-20 LOADING.

REINFORCEMENT: GRADE 60 REINFORCED. NO. 4 STEEL REBAR TO CONFORM TO ASTM A615 ON REQUIRED CENTERS OR EQUAL.

C.I. CASTINGS: CAST IRON FRAMES AND GRATES ARE MANUFACTURED OF GREY CAST IRON CONFORMING TO ASTM A48-76 CLASS 30.



TYPE C 10'-0" CURB INLET					TEXAS HIGHWAY DEPARTMENT - MODEL THDC3510	
PM	PC	DRN	ENG	DWG. NO.	REV.	
DATE	2023	THDC3510			A	

PLOTTED ON 4/19/2024 3:56 PM BY Vu. Kate. C:\Users\vu\Desktop\file replacement website\THDC3510