

HOW TO SPECIFY:

SWS-

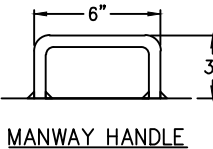
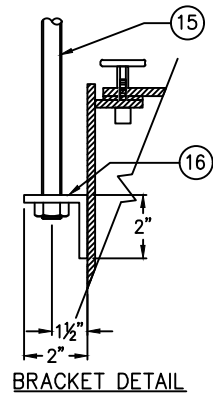
SAMPLE WELL SIZE:
 15 - 15" DIA
 24 - 24" DIA

INLET/OUTLET SIZE:
 3 - 3"
 4 - 4"
 6 - 6"
 8 - 8"

INLET/OUTLET TYPE:
 H - NO HUB
 T - FPT
 F - FLANGE
 V - VICTAULIC

KEYED NOTES		
MARK	QTY	DESCRIPTION
1	1	SS304 STAINLESS STEEL
2	1	STAINLESS STEEL HANDLE
3	8	TEE HANDLE
4	1	1/8" THK NEOPRENE GASKET ADHERED TO BASIN FLANGE
5	1	3/8" CS NUT WELD TO FLANGE
6	1	2" MJ (NO HUB) VENT
7	1	HANGER BRACKET (TYP 2)
8	1	1" FPT SAMPLE PORT
9	1	PIPE CONNECTION (TYP)
10	1	ROD HANGARS SUPPORTED TO BUILDING STRUCTURE
11	1	SAMPLE WELL
12	1	SEWER PIPING
13	1	DISCHARGE TO SANITARY SEWER
14	1	1" SAMPLE PORT WITH BRASS BALL VALVE
15	1	1/2" ATR SUPPORT RODS (BY OTHERS)
16	1	2"x1/4" HANGAR BRACKET (TYP 2)
17	1	NAMEPLATE MFG: PARKUSA 888-611-PARK WWW.PARKUSA.COM MODEL: SWS-XX DATE MANUFACTURED S/N: XXXXXX

MODEL	A (DIA)	B (HT)	SIZE	C
SWS-15	15"	18"	3"	2 1/2"
SWS-24	24"	30"	4"	4"
			6"	4"
			8"	5"



SPECIFICATIONS

THE MODEL SWS SAMPLE WELL ASSEMBLY IS CONSTRUCTED OF TYPE 304 STAINLESS STEEL CONFORMING TO ASTM A480 STANDARDS. THE UNIT SHALL INCLUDE INLET, OUTLET, AND SAMPLE PORT CONNECTIONS, REMOVABLE LID WITH SECURING BOLTS AND GASKET, AND SUPPORT BRACKETS.


TYPICAL APPLICATIONS

A SAMPLE WELL IS USED IN SEWER APPLICATIONS TO ALLOW FOR PERIODIC SAMPLING OF THE WASTEWATER (USUALLY REQUIRED BY THE ADMINISTRATIVE AUTHORITY). WASTEWATER SAMPLES ARE USED TO MONITOR THE PERFORMANCE OF GREASE/LINT INTERCEPTORS, OIL/WATER SEPARATORS, STORMWATER INTERCEPTORS, OR ACID NEUTRALIZATION TANKS.

SAMPLES ARE TAKEN FROM THE SAMPLE PORT OR BY REMOVING THE COVER. THE SAMPLE IS THEN SENT TO A LABORATORY FOR ANALYSIS FOR BOD, TSS, PH, AND OIL/GREASE CONTENT.

THE PARK MODEL SWS SAMPLE WELL IS RECOMMENDED FOR USE IN A NON-BURIED APPLICATIONS SUCH AS BASEMENTS. THE SAMPLE WELL SHOULD BE ADEQUATELY SUPPORTED FROM BUILDING STRUCTURE.





PARK USA
A Northwest Pipe Company

**SAMPLE WELL BASIN
MODEL SWS (ABOVE GRADE)**

PM	PC	DRN	ENG	DWG. NO.	REV.
DATE	5/24			SWS-1-WA	A

LAST MODIFIED BY KJU ON 5/31/2024 10:27 AM; LAST PLOTTED ON 5/31/2024 10:28 AM BY WJ, KATE; FILE NAME: SWS-1-WA.DWG

© ParkUSA. ALL RIGHTS RESERVED.