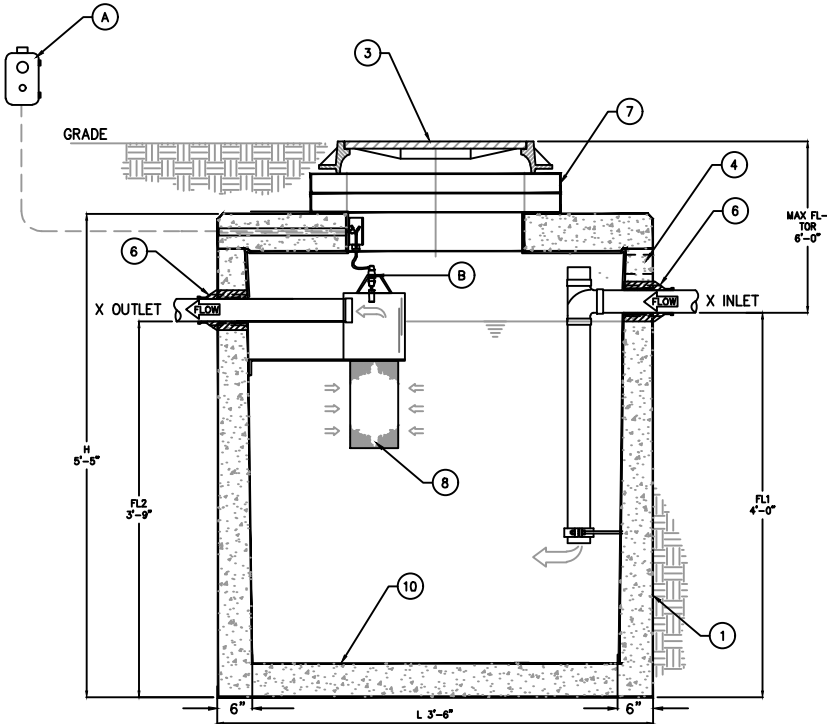


PLAN VIEW



ELEVATION

KEYED NOTES		
MARK	QTY	DESCRIPTION
1	1	PRECAST CONCRETE SOLIDS INTERCEPTOR
2	1	3/4" CONDUIT
3	1	24" CAST IRON FRAME AND COVER
4	1	X" VENT
5	1	INLET AND OUTLET SCH 40 PVC PIPING
6	2	RESILIENT RUBBER BOOT
7	1	CONCRETE EXTENSION RINGS AS REQ'D
8	1	REMOVABLE SS FILTER SCREEN
9	1	NAMEPLATE INDICATING: MFG: ParkUSA 888-611-PARK MODEL: STSC-01 DATE MANUFACTURED
10	1	EPOXY INTERIOR COATING

CONTROL NOTES		
MARK	QTY	DESCRIPTION
A	1	SERVICE ALERT PANEL, NOTIFIES OF CLOGGED FILTER w/ AUDIBLE & VISUAL ALARM (120V/5 AMP)
B	1	FILTER MAINTENANCE (OPTIONAL)



APPLICATIONS

- KITCHEN DISPOSAL & GRINDER WASTELINES
- LIVESTOCK/BARN
- MANUFACTURING AREAS
- MEDICAL WASTE
- MANUFACTURING FACILITY EFFLUENT WATER
- RECYCLING CENTERS

GENERAL INFORMATION

THE STSC SOLIDS INTERCEPTOR IS USED TO PREVENT POTENTIALLY HARMFUL DEBRIS FROM ENTERING INTO THE PUBLIC SANITARY SEWER. THE MULTI-CHAMBER TANK SEPARATES & COLLECTS THE DEBRIS FROM THE WASTEWATER. AN EFFLUENT SCREEN POLISHES THE WASTEWATER PRIOR TO ENTERING THE PUBLIC SEWER. A SERVICE ALERT SYSTEM WILL INDICATE WHEN SERVICE IS NEEDED. EASY MAINTENANCE IS PERFORMED BY PUMPING OUT THE UNIT BY A PROFESSIONAL WASTE DISPOSAL SERVICE. THE EFFLUENT SCREEN CAN BE REMOVED & CLEANED AS REQUIRED.

SOLIDS INTERCEPTOR SCHEDULE									
MODEL NO.	CAPACITY USGal	FLOW RATE GPM	SOLIDS CAP (LBS)	LENGTH L	WIDTH W	HEIGHT H	INLET FL1	OUTLET FL2	
STSC-150	150	15	360	3'-6"	3'-6"	5'-5"	4'-0"	3'-9"	
STSC-200	200	20	480	5'-0"	5'-0"	4'-2"	3'-1"	2'-10"	
STSC-300	300	30	725	5'-0"	5'-0"	4'-8"	3'-3"	3'-0"	
STSC-400	400	40	1,000	5'-0"	5'-0"	5'-5"	4'-0"	3'-9"	

OTHER SIZES ARE AVAILABLE. CONTACT US FOR MORE INFORMATION

SPECIFICATIONS

- CONCRETE:** CLASS I/II CONCRETE WITH DESIGN STRENGTH OF 4500 PSI AT 28 DAYS. UNIT IS OF MONOLITHIC CONSTRUCTION AT FLOOR, FIRST STAGE OF WALL AND BAFFLE WITH SECTIONAL RISER TO REQUIRED DEPTH. GROSS EMPTY WEIGHT OF APPROXIMATELY INDICATED.
- REINFORCEMENT:** GRADE 60 REINFORCED WITH STEEL REBAR CONFORMING TO ASTM A615 ON REQUIRED CENTERS OR EQUAL. STRUCTURAL DESIGN IS BASED ON AASHTO HS20 LOADING.
- C.I. CASTINGS:** MANHOLE FRAMES, COVERS OR GRATES ARE MANUFACTURED OF GRAY CAST IRON CONFORMING TO ASTM A48-76 CLASS 30. MANHOLE SHALL HAVE 24 INCH INSIDE DIAMETER AND BE TRAFFIC DUTY.

ENGINEERING DATA

INTERCEPTOR IS STRUCTURALLY AND HYDRAULICALLY ENGINEERED CONFORMING TO UPC/IPC PLUMBING CODE. NOMINAL LIQUID CAPACITY AS INDICATED. MANUFACTURER TO PROVIDE BUOYANCY CALCULATIONS CERTIFIED BY A LICENSED ENGINEER UPON REQUEST. FIELD EXCAVATION AND PREPARATION SHALL BE COMPLETED PRIOR TO DELIVERY OF INTERCEPTOR. USE DIMENSIONAL DATA AS SHOWN.



© ParkUSA. ALL RIGHTS RESERVED.



SOLIDS INTERCEPTOR
MODEL STSC SIZE 150 THRU 400 GALLONS

PM	PC	DRN	ENG	DWG. NO.	REV.
.	.	.	.	STSC-1	A
DATE				2023	

CREATED ON 4/19/2024 BY LAST MODIFIED ON 4/19/2024 4:05 PM BY kv

PLOTTED ON 4/19/2024 4:07 PM BY Vu, Kats, C:\Users\Vu\Desktop\file replacement website\STSC-1