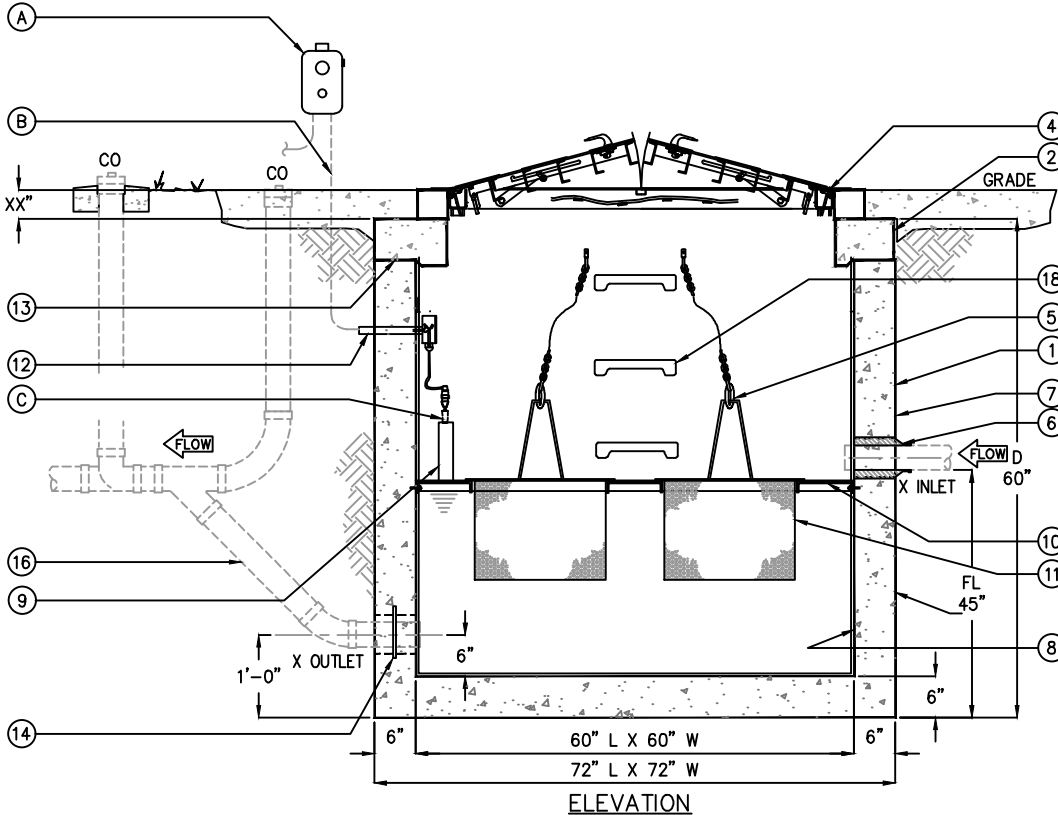


ISOMETRIC

SSB SOLIDS INTERCEPTOR SCHEDULE						
MODEL	GAL CAP	SOLIDS CAPACITY LBS	SCREEN QTY	DIMENSIONS		
				L	W	FL
SSB-500	500	150	3	72	72	45
SSB-750	750	150	3	72	72	57
SSB-1004	1000	200	4	84	84	48

ALL DIMENSIONS IN INCHES

KEYED NOTES		
MARK	QTY	DESCRIPTION
1	1	PRECAST CONCRETE BASIN
2	1	6" THK LID
3	1	PRECAST CONCRETE GRADE RINGS (AS REQ'D)
4	1	48"x48" GALV. STEEL HATCHWAY SQ. H20 RATED w/SAFETY NET (LOOSE)
5	1	SS304 LIFTING HANDLES
6	1	4" PSX RESILIENT RUBBER BOOT w/ POSITIVE SEAL
7	1	BITUMASTIC EXTERIOR LINER
8	1	EPOXY INTERIOR LINER
9	1	4" EMERGENCY BYPASS
10	1	BASKET FRAME CONSTRUCTED OF TYPE 304 STAINLESS STEEL SECURED TO WALLS w/ SS ANCHOR BOLTS
11	1	REMOVABLE LINT BASKET w/ LIFTING HANDLES. BASKET CONSTRUCTED OF TYPE 304 STAINLESS STEEL PERFORATED SCREEN (BD-SSB-500)
12	1	3/4" PVC CONDUIT
13	1	JOINTS TO BE FILLED w/ PLASTIC FLEXIBLE GASKET (RAM-NEK)
14	1	4" PVC w/ WATERSTOP
15	1	3" VENT
16	-	TYPICAL PIPING (BY OTHERS)
17	1	NAMEPLATE INDICATING: MFG: ParkUSA 888-611-PARK MODEL:SSB-500 DATE MANUFACTURED
18	3	OSHA STEPS @ 12" O.C.



ELEVATION

CONTROL NOTES		
MARK	QTY	DESCRIPTION
A	1	"SERVICE ALERT PANEL" NOTIFIES OF CLOGGED FILTER w/ AUDIBLE & VISUAL ALARM (120V/5 AMP)
B	1	CABLE & CONDUIT ROUTED TO ALARM PANEL (BY OTHERS)
C	1	HIGH LEVEL ALARM FLOAT SWITCH (N.O.)

APPLICATIONS

- KITCHEN DISPOSAL & GRINDER WASTELINES
- LIVESTOCK/BARN
- MANUFACTURING AREAS
- MEDICAL WASTE
- MANUFACTURING FACILITY EFFLUENT WATER
- RECYCLING CENTERS

GENERAL INFORMATION

THE SSB SOLIDS INTERCEPTOR IS USED TO PREVENT POTENTIALLY HARMFUL DEBRIS FROM ENTERING INTO THE PUBLIC SANITARY SEWER. THE UNIT IS DESIGNED FOR EASY MAINTENANCE BY FACILITY PERSONNEL. SCREENS COLLECT THE DEBRIS FROM THE WASTEWATER. A SERVICE ALERT SYSTEM WILL INDICATE WHEN SERVICE IS NEEDED. THE DEBRIS SCREENS ARE THEN TEMPORARILY REMOVED AND EMPTIED INTO AN APPROVED SOLIDS WASTE DUMPSTER.



SPECIFICATIONS

- CONCRETE:** CLASS I/II CONCRETE WITH DESIGN STRENGTH OF 4500 PSI AT 28 DAYS. UNIT IS OF MONOLITHIC CONSTRUCTION AT FLOOR AND FIRST STAGE OF WALL WITH SECTIONAL RISER TO REQUIRED DEPTH.
- REINFORCEMENT:** #4 GRADE 60 REINFORCED WITH STEEL REBAR CONFORMING TO ASTM A615 ON 12" O.C.E.W. OR EQUAL IN BOTTOM, WALLS, AND TOP.
- D.I. CASTINGS:** MANHOLE FRAMES, COVERS OR GRATES ARE MANUFACTURED OF DUCTILE IRON CONFORMING TO ASTM A536, AASHTO M306, & AASHTO M105 STANDARDS. MANHOLE SHALL BE NOMINAL 24" DIAMETER AND BE TRAFFIC DUTY.

ENGINEERING DATA

INTERCEPTOR IS STRUCTURALLY AND HYDRAULICALLY ENGINEERED CONFORMING TO UNIFORM PLUMBING CODE. THE INTERCEPTOR SHALL BE FACTORY ASSEMBLED PRIOR TO DELIVERY.

FIELD EXCAVATION AND PREPARATION SHALL BE COMPLETED PRIOR TO DELIVERY OF INTERCEPTOR. USE DIMENSIONAL DATA AS SHOWN.



NAMEPLATE



SOLIDS INTERCEPTOR
MODEL SSB SIZE 500 THRU 1000 GALLONS

PM	PC	DRN	ENG	DWG. NO.	REV.
				SSB-2	A
DATE				2023	

© ParkUSA. ALL RIGHTS RESERVED.

PLOTTED ON 4/19/2024 4:08 PM BY Yu. Kats. C:\Users\Yu\Desktop\file replacement website\SSB-2

CREATED ON 4/19/2024 BY ...
LAST MODIFIED ON 4/19/2024 4:08 PM BY Yu.