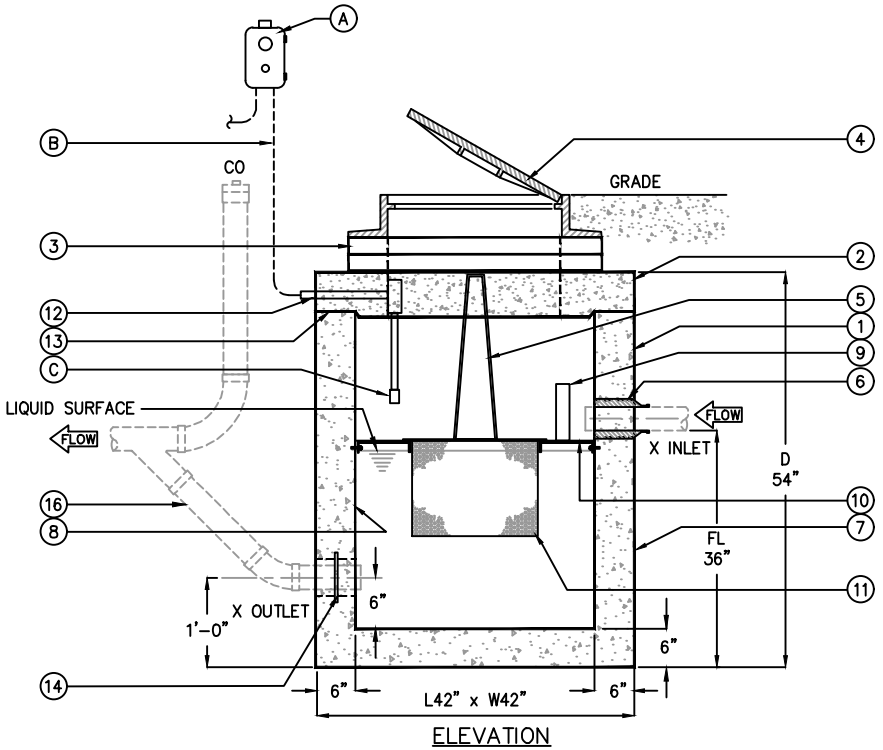


SOLIDS INTERCEPTOR SCHEDULE								
MODEL	GAL CAP	SOLIDS CAPACITY LBS	SCREEN QTY	DIMENSIONS				
				L	W	FL	D	
* SSB-100	100	30	1	42	42	36	54	
SSB-150	150	40	1	48	48	42	66	
SSB-200	200	50	1	60	60	36	54	
* SSB-250	250	60	1	48	48	57	72	
* SSB-350	350	80	2	60	60	45	60	
SSB-400	400	80	1	60	60	54	72	
* SSB-550	550	120	3	72	72	45	60	

ALL DIMENSIONS IN INCHES  
 (\*) special circumstances

KEYED NOTES		
MARK	QTY	DESCRIPTION
1	1	PRECAST CONCRETE BASIN
2	1	6" THK LID
3	1	PRECAST CONCRETE GRADE RINGS (AS REQ'D)
4	1	24" DIA CAST IRON RING & COVER, or DUCTILE IRON HINGED or CAST-IN or BOLT-DOWN
5	1	SS304 LIFTING HANDLES
6	1	4"-6" PSX RESILIENT RUBBER BOOT w/ POSITIVE SEAL
7	1	BITUMASTIC EXTERIOR LINER
8	1	EPOXY INTERIOR LINER
9	1	4" EMERGENCY BYPASS
10	1	BASKET FRAME CONSTRUCTED OF TYPE 304 STAINLESS STEEL SECURED TO WALLS w/ SS ANCHOR BOLTS
11	1	REMOVABLE LINT BASKET w/ LIFTING HANDLES. BASKET CONSTRUCTED OF TYPE 304 STAINLESS STEEL PERFORATED SCREEN (BD-SSB-100)
12	1	3/4" PVC CONDUIT
13	1	JOINTS TO BE FILLED w/ PLASTIC FLEXIBLE GASKET (RAM-NEK)
14	1	4" PVC or 6" w/ WATERSTOP
15	1	3" VENT
16	-	TYPICAL PIPING (BY OTHERS)
17	1	NAMEPLATE INDICATING: MFG: ParkUSA 888-611-PARK MODEL: SSB-100 DATE MANUFACTURED
* 18	0	30" by 42" or 36" by 36" GALVANIZED STEEL HATCHWAY

(\*) special circumstances



CONTROL NOTES		
MARK	QTY	DESCRIPTION
A	1	"SERVICE ALERT PANEL" NOTIFIES OF CLOGGED FILTER w/ AUDIBLE & VISUAL ALARM (120V/5 AMP)
B	1	CABLE & CONDUIT ROUTED TO ALARM PANEL (BY OTHERS)
C	1	HIGH LEVEL ALARM FLOAT SWITCH (N.O.)

**GENERAL INFORMATION**  
 A TYPICAL APPLICATION FOR THE MODEL SSB SOLIDS INTERCEPTOR IS WHERE FOOD WASTE GRINDERS ARE USED, AND WHERE THE SITE IS MAINTAINED BY FACILITY PERSONNEL. REMOVABLE SCREENS COLLECT SOLIDS FROM THE WASTEWATER TO BE DISPOSED OF IN A SOLID WASTE DUMPSTER.

**TYPICAL APPLICATIONS INCLUDE:**

- COMMERCIAL KITCHENS & FOOD PREP AREA
- CORRECTIONAL INSTITUTIONS
- SCHOOLS
- HOSPITALS
- APARTMENTS
- GENERAL INDUSTRY

RECOMMENDED BY THE INTERNATIONAL PLUMBING CODE SECTION 1003.3.2



**SPECIFICATIONS**

- CONCRETE:** CLASS I/II CONCRETE WITH DESIGN STRENGTH OF 4500 PSI AT 28 DAYS. UNIT IS OF MONOLITHIC CONSTRUCTION AT FLOOR AND FIRST STAGE OF WALL WITH SECTIONAL RISER TO REQUIRED DEPTH.
- REINFORCEMENT:** #4 GRADE 60 REINFORCED WITH STEEL REBAR CONFORMING TO ASTM A615 ON 12" O.C.E.W. OR EQUAL IN BOTTOM, WALLS, AND TOP.
- D.I. CASTINGS:** MANHOLE FRAMES, COVERS OR GRATES ARE MANUFACTURED OF DUCTILE IRON CONFORMING TO ASTM A536, AASHTO M306, & AASHTO M105 STANDARDS. MANHOLE SHALL BE NOMINAL 24" DIAMETER AND BE TRAFFIC DUTY.

**ENGINEERING DATA**

INTERCEPTOR IS STRUCTURALLY AND HYDRAULICALLY ENGINEERED CONFORMING TO UNIFORM PLUMBING CODE. THE INTERCEPTOR SHALL BE FACTORY ASSEMBLED PRIOR TO DELIVERY.

FIELD EXCAVATION AND PREPARATION SHALL BE COMPLETED PRIOR TO DELIVERY OF INTERCEPTOR. USE DIMENSIONAL DATA AS SHOWN.



NAMEPLATE



SOLIDS INTERCEPTOR  
 MODEL SSB SIZE 100 THRU 400 GALLONS

PM	PC	DRN	ENG	DWG. NO.	REV.
				SSB-1	A
DATE 03/2023					

CREATED ON 4/19/2024 BY... LAST MODIFIED ON 4/19/2024 4:09 PM BY NW

PLOTTED ON 4/19/2024 4:08 PM BY Yu. Kate, C:\Users\Yu\Desktop\file replacement website\SSB-1

© ParkUSA. ALL RIGHTS RESERVED.