

SPECIFICATIONS

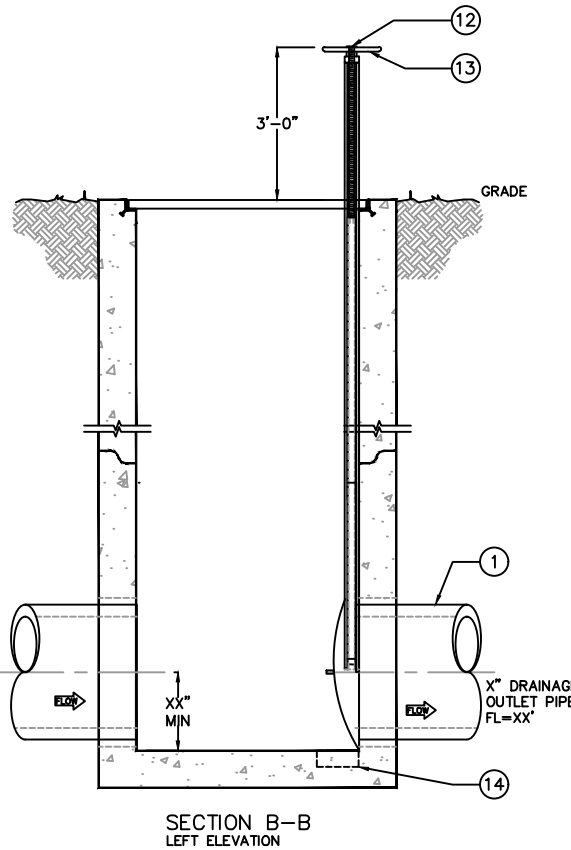
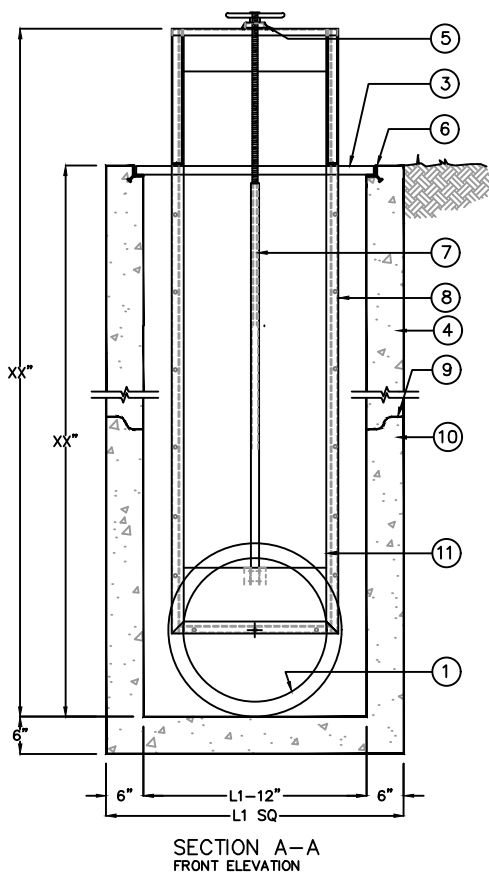
CONCRETE :
 CLASS 1/II CONCRETE WITH OF DESIGN STRENGTH OF 4500 PSI AT 28 DAYS. UNIT IS OF MONOLITHIC CONSTRUCTION AT FLOOR AND FIRST STAGE OF WALL WITH SECTIONAL RISER TO REQUIRED DEPTH. RATED FOR H-20 LOADING.


REINFORCEMENT :
 GRADE 60 REINFORCED. NO. 4 STEEL REBAR TO CONFORM TO ASTM A615 ON REQUIRED CENTERS OR EQUAL.

GRATING :
 ALL STEEL FABRICATION SHALL BE IN ACCORDANCE TO AWA D1.1. STEEL SHALL BE ASTM A36 CARBON STEEL, AND HOT-DIPPED GALVANIZED AFTER FABRICATION IN ACCORDANCE TO ASTM A123. GRATE SHALL BE PEDESTRIAN RATED.

GATE VALVE :
 SLIDE GATE VALVE SHALL BE CAST IRON W/ MACHINED SEATS, GALVANIZED STEEL FRAME W/ FLANGE BACK FOR MOUNTING ON FLAT WALL, CARBON STEEL STEM, ACME TYPE THREADS, BRONZE NUT, AND HAND WHEEL OPERATOR.

KEYED NOTES		
MARK	QTY	DESCRIPTION
1	1	XX" DRAINAGE PIPE
2	1	XX"xxx" DIA BLOCKOUT
3	1	GALVANIZED STEEL BAR GRATING
4	1	PRECAST CONCRETE TOP SECTION
5	1	ENCLOSED BEARING
6	1	GALVANIZED STEEL FRAME w/ EMBED ANCHORS
7	1	ACME THREADED ROD
8	1	GALVANIZED STEEL FRAME
9	1	SECTIONAL JOINT SEALED w/ RAM-NEK
10	1	PRECAST CONCRETE BASIN MFG BY PARKUSA
11	1	HEAVY DUTY SLIDE GATE VALVE
12	1	RIISING STEM
13	1	HANDWHEEL
14	1	RECESS BLOCKOUT AREA FOR VALVE
15	1	NAMEPLATE INDICATING: MFG: ParkUSA 888-611-PARK WWW.PARKUSA.COM MODEL: SG-1 DATE MANUFACTURED





PARK USA
A Northwest Pipe Company

**SLIDE GATE VALVE
ASSEMBLY MODEL SG-1**

PM	PC	DRN	ENG	DWG. NO.	REV.
DATE	2023			SG-1	A

CREATED ON 4/19/2024 BY
 LAST MODIFIED ON 4/19/2024 4:21 PM BY kw

PLOTTED ON 4/19/2024 4:21 PM BY Vu. Kate, C:\Users\vu\Desktop\File replacement website\SG-1