



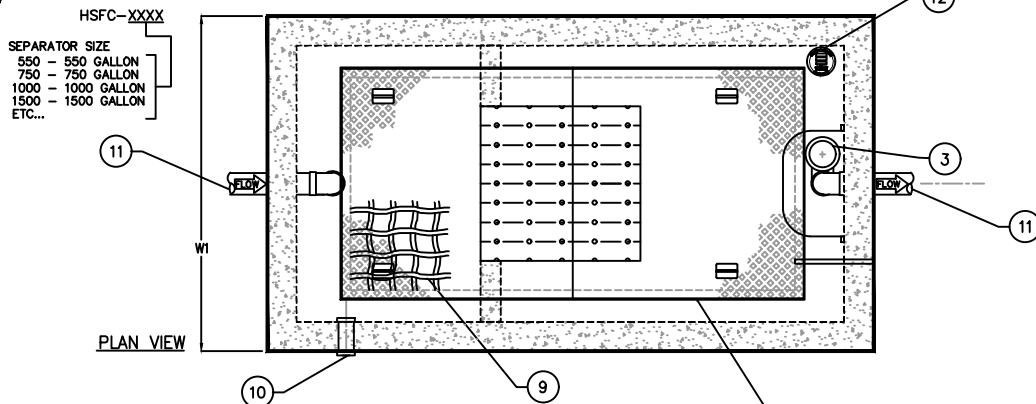
- APPLICATIONS**
- AVIATION MAINTENANCE & WASHDOWN
 - HELIPORTS
 - HANGER FACILITIES
 - STORMWATER RUNOFF
 - AVIATION FUEL DEPOTS
 - REMEDIATION WATER CLEANUP



GUARANTEED PERFORMANCE
 A certified performance analysis utilizing a proprietary computer program will accurately model systems to ensure that their effluent qualities meet the required discharge criteria (EPA and Local Codes)

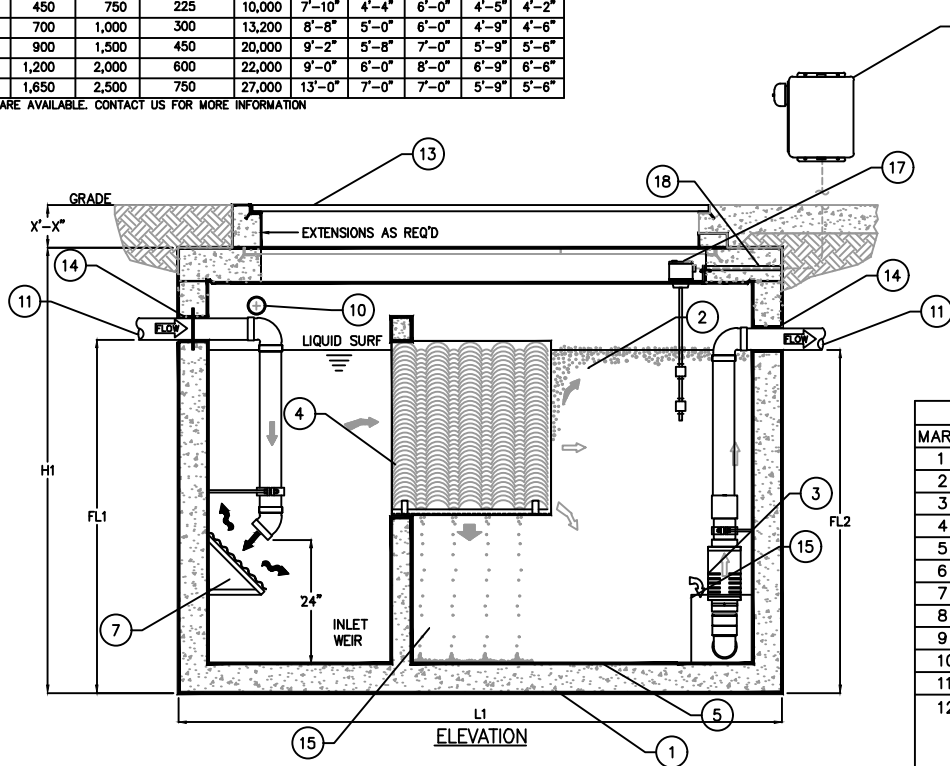
Influent oily water contains oil droplets of many different sizes. These droplets rise at different rates. Park utilizes a statistical program that divides the droplets into ranges of sizes and calculates the rise rates of each range. This calculation determines which droplets the separator can capture.

Contact our Engineering Dept. @ 888-611-PARK for a free performance evaluation.



FUEL/OIL SEPARATOR SCHEDULE									
MODEL NO.	MAX FLOW GPM	CAPACITY USGal	FUEL/OIL CAP. US (GAL)	EMPTY WT (LBS)	LENGTH L1	WIDTH W1	HEIGHT H1	INLET FL1	OUTLET FL2
HSFC-500	225	500	150	9,000	7'-10"	4'-4"	4'-6"	3'-3"	3'-0"
HFSC-750	450	750	225	10,000	7'-10"	4'-4"	6'-0"	4'-5"	4'-2"
HFSC-1000	700	1,000	300	13,200	8'-8"	5'-0"	6'-0"	4'-9"	4'-6"
HFSC-1500	900	1,500	450	20,000	9'-2"	5'-8"	7'-0"	5'-9"	5'-6"
HFSC-2000	1,200	2,000	600	22,000	9'-0"	6'-0"	8'-0"	6'-9"	6'-6"
HFSC-2500	1,650	2,500	750	27,000	13'-0"	7'-0"	7'-0"	5'-9"	5'-6"

OTHER SIZES ARE AVAILABLE. CONTACT US FOR MORE INFORMATION



KEYED NOTES		
MARK	QTY	DESCRIPTION
1	1	HELIPORT FUEL SEPARATOR
2	1	FUEL/OIL CHAMBER
3	2	AUTOMATIC FUEL STOP VALVE
4	1	COALESCING-MEDIA PACK
5	1	EPOXY INTERIOR LINER
6	1	SLUDGE CHAMBER
7	1	DIFFUSION BAFFLE
8	1	HIGH FUEL ALARM PANEL
9	1	OSHA COMPLIANT SAFETY NET
10	2	4" VENT COUPLING
11	2	X" INPUT AND OUTPUT
12	1	NAMEPLATE INDICATING: MFG: ParkUSA 888-611-PARK MODEL: HFSC-01 DATE MANUFACTURED
13	1	ACCESS HATCHWAY w/SAFETY NET
14	2	RESILIENT BOOT
15	1	SLUDGE BAFFLE
16	1	30 X 60 GALVANIZED STEEL PARKWAY.
17	1	HIGH FUEL FLOAT SWITCH
18	1	3/4" CONDUIT SLEEVE

GUARANTEED PERFORMANCE FOR CODE MAXIMUM OIL CONCENTRATION
 (SANITARY SEWER 400 PPM, STORM SEWER 15 PPM)

SPECIFICATIONS

- CONCRETE:** DESIGN STRENGTH OF 4500 PSI AT 28 DAYS. UNIT IS OF MONOLITHIC CONSTRUCTION AT FLOOR AND FIRST STAGE OF WALL WITH SECTIONAL RISER TO REQUIRED DEPTH.
- REINFORCEMENT:** GRADE 60 REINFORCED WITH STEEL REBAR CONFORMING TO ASTM A615 ON REQUIRED CENTERS OR EQUAL.
- MATERIALS:** ACCESS FRAME & COVER SHALL BE FABRICATED WITH MIN. 1/4" THICK NONSKID FLOOR PLATE, BOLTDOWN, & LIFTING HANDLES. ALL MATERIALS TO BE CORROSION RESISTANT.

ENGINEERING DATA

INTERCEPTOR IS STRUCTURALLY AND HYDRAULICALLY ENGINEERED CONFORMING TO UNIFORM PLUMBING CODE. NOMINAL TOTAL LIQUID CAPACITY AND OIL HOLDING CAPACITY AS INDICATED. MANUFACTURER SHALL SUBMIT PERFORMANCE CALCULATIONS FOR OIL & WATER SEPARATION CERTIFIED BY A LICENSED PROFESSIONAL ENGINEER. FIELD EXCAVATION AND PREPARATION SHALL BE COMPLETED PRIOR TO DELIVERY OF INTERCEPTOR.



© ParkUSA. ALL RIGHTS RESERVED.



HELIPORT FUEL SEPERATOR
 HFSC

PM	PC	DRN	ENG	DWG. NO.	REV.
				HFSC-1	A
DATE	2022				

PLOTTED ON 4/22/2024 11:41 AM BY Vu, Kate, D:\File replacement website\HFSC-1-UPDATED-2022