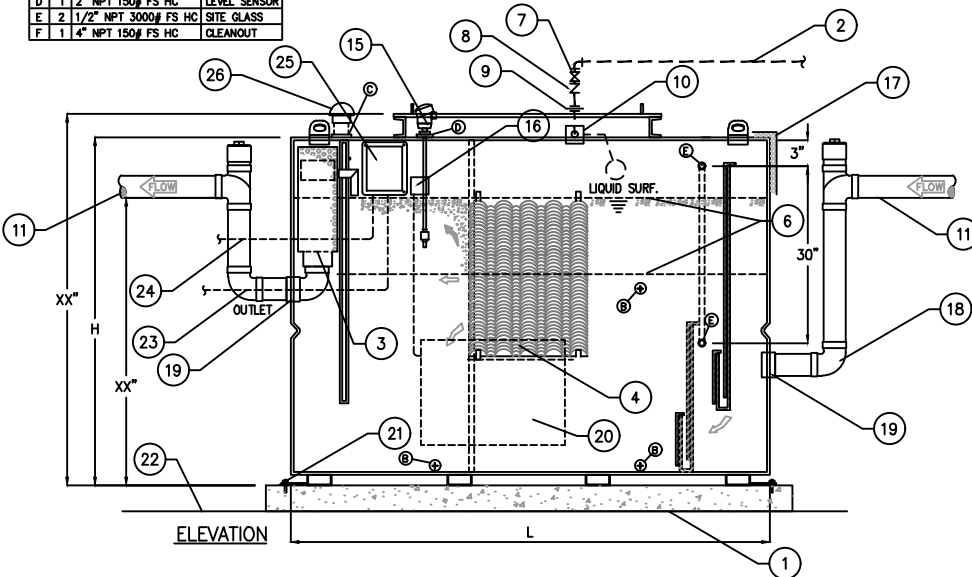


TAG	QTY	DESCRIPTION	INLET/OUTLET
A	2	4" ANSI 150# FLG	INLET/OUTLET
B	2	2" NPT 150# FS HC	DRAIN
C	1	2" NPT 150# FS HC	VENT
D	1	2" NPT 150# FS HC	LEVEL SENSOR
E	2	1/2" NPT 3000# FS HC	SITE GLASS
F	1	4" NPT 150# FS HC	CLEANOUT



KEYED NOTES		
MARK	QTY	DESCRIPTION
1	1	HELIPORT FUEL SEPARATOR
2	2	1" CW LINE (BY OTHERS)
3	2	AUTOMATIC FUEL STOP VALVE
4	1	PARK COALESCING-MEDIA PACK
5	1	1" M/U WATER VALVE
6	1	FUEL DETAINMENT AREA (300 GAL)
7	1	1" GATE VALVE
8	1	1" BACKFLOW PREVENTER
9	1	1" UNION
10	1	1" MAKEUP WATER VALVE
11	2	X" INPUT AND OUTPUT
12	1	NAMEPLATE INDICATING: MFG: ParkUSA 888-611-PARK MODEL: HFS-01 DATE MANUFACTURED
13	1	ACCESS RELEASE COVER w/QUICK RELEASE
14	1	REMOVABLE STEEL COVER w/HANDLES
15	1	FUEL HIGH LEVEL PROBE (INTRINSIC-SAFE)
16	1	FREEZE PROTECTION THERMOSTAT (OPTIONAL)
17	1	1" INSULATION ON EXT. WALLS & TOP OF TANK(FIELD APPLIED)
18	1	TYPICAL PIPING BY OTHERS
19	2	X" FPT INLET & OUTLET CONNECTION
20	1	SILICON RUBBER HEAT BLANKET
21	1	EQUIPMENT PAD TYP (BY OTHERS)
22	1	FIN FLR
23	1	TO BAS (BY OTHERS)
24	1	120V SERVICE (BY OTHERS)
25	1	HIGH LEVEL CONTROL MOUNTED INTERCEPTOR
26	1	2" PRESSURE-VACUUM VENT
27	1	MTG BRACKET

MODEL	NOMINAL SIZE LENGTH x WIDTH x HEIGHT	FLOW RATE GPM	SPILL CAP. USGAL	TANK CAP. USGAL	INLET-OUTLET SIZE	EMPTY WEIGHT-LBS	GROSS WEIGHT-LBS
HFS-100	3'-0" x 1'-6" x 4'-0"	60	30	100	4" - 4"	600	1,442
HFS-200	4'-0" x 2'-0" x 4'-4"	90	60	200	4" - 4"	900	2,398
HFS-300	4'-0" x 3'-0" x 4'-4"	135	90	300	4" - 4"	1,200	3,446
HFS-400	5'-0" x 3'-0" x 4'-6"	180	120	400	6" - 6"	1,400	4,208
HFS-500	5'-0" x 4'-0" x 4'-4"	225	150	500	6" - 6"	1,600	4,196
HFS-600	6'-0" x 4'-0" x 4'-4"	300	180	600	6" - 6"	1,800	4,970
HFS-700	6'-0" x 4'-0" x 5'-0"	400	210	700	6" - 6"	2,000	6,293
HFS-800	8'-0" x 4'-0" x 4'-4"	500	240	800	6" - 6"	2,200	7,990
HFS-900	8'-0" x 4'-0" x 4'-10"	600	270	900	8" - 8"	2,400	8,190
HFS-1000	8'-0" x 4'-0" x 5'-4"	700	300	1,000	8" - 8"	2,500	10,387
HFS-1200	8'-0" x 5'-0" x 5'-0"	800	360	1,200	8" - 8"	2,800	10,487
HFS-1500	8'-0" x 6'-0" x 5'-4"	900	450	1,500	8" - 8"	3,300	12,784
HFS-1800	10'-0" x 6'-0" x 5'-0"	1,000	540	1,800	8" - 8"	3,700	15,281
HFS-2000	10'-0" x 6'-0" x 5'-6"	1,200	600	2,000	8" - 8"	3,900	20,748

SPECIFICATIONS

TANK SHALL BE DESIGNED TO WITHSTAND STATIC & DYNAMIC HYDRAULIC LOADINGS WHILE EMPTY & DURING OPERATION. TANK SHALL BE CONSTRUCTED OF 1/2" CARBON STEEL CONFORMING TO ASTM A36 FOR TANKS, WEIRS, FLOW DISTRIBUTORS, AND ENERGY DISSIPATER DEVICE. ALL INTERNAL COMPONENTS SHALL CONSIST OF CORROSION RESISTANT MATERIALS OR BE COAL TAR EPOXY COATED. WELD IN ACCORDANCE WITH AWA D1.1 TO PROVIDE WATER-TIGHT TANK THAT WILL NOT WARP OR DEFORM EXCESSIVELY UNDER LOAD. MANWAY ACCESS COVERS SHALL BE BOLTED AND GASKETED. TANK INTERIOR & EXTERIOR SHALL BE COATED 8 MILS FLEXCOAT EPOXY.

ENGINEERING DATA

A FABRICATED FUEL-WATER INTERCEPTOR IS RECOMMENDED FOR HELIPORT INSTALLATIONS TO MINIMIZE POTENTIAL FIRE HAZARDS IN THE EVENT OF A FUEL SPILL. THE SEPARATOR IS TO BE LOCATED SUCH THAT SPILLED FUEL IS CONTAINED PRIOR TO ENTERING THE STORM PIPING.



GUARANTEED PERFORMANCE
A certified performance analysis utilizing a proprietary computer program will accurately model systems to ensure that their effluent qualities meet the required discharge criteria (EPA and Local Codes)

Influent oily water contains oil droplets of many different sizes. These droplets rise at different rates. Park utilizes a statistical program that divides the droplets into ranges of sizes and calculates the rise rates of each range. This calculation determines which droplets the separator can capture.

Contact our Engineering Dept. @ 888-611-PARK for a free performance evaluation.



© ParkUSA. ALL RIGHTS RESERVED.



HELIPORT FUEL SEPARATOR MODEL HFS-100 THRU 2000 GALLONS

PM	PC	DRN	ENG	DWG. NO.	REV.
				HFS-1	A
DATE	12/22				