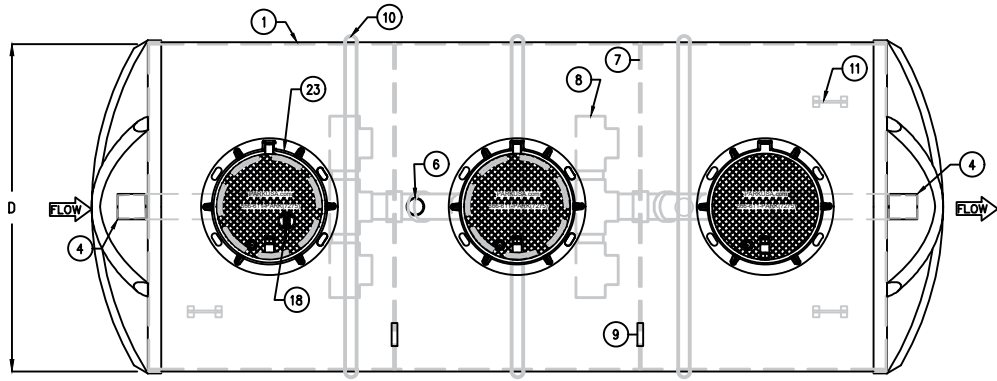
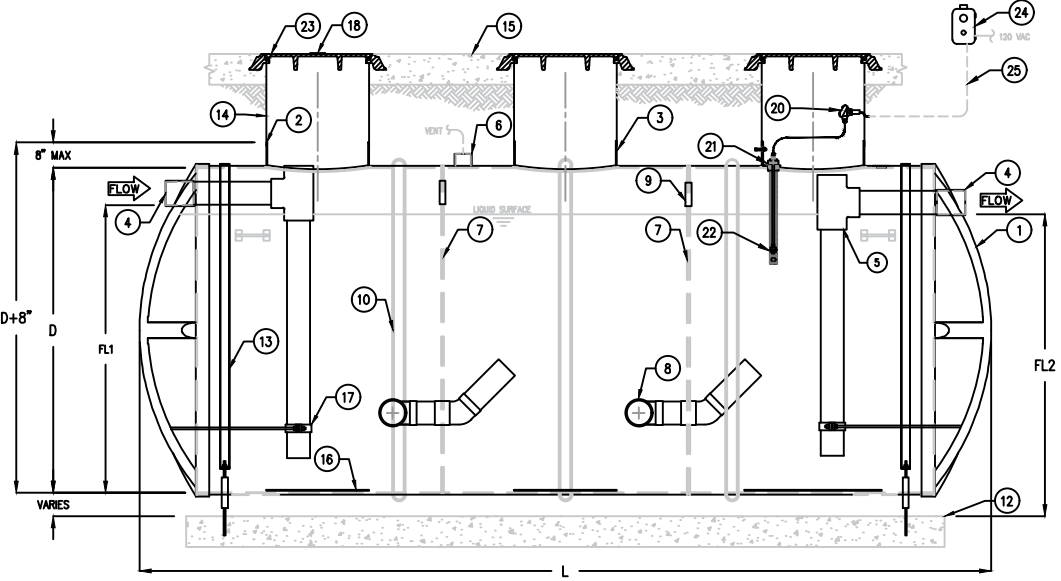


KEYED NOTES		
MARK	QTY	DESCRIPTION
1	1	REINFORCED FIBERGLASS GREASE INTERCEPTOR
2	-	EXTENSION ANNULUS TO BE SEALED w/ SILICON SEALANT (TYP)
3	3	FIBERGLASS MANWAY EXTENSION
4	2	X" PVC PIPE COUPLING
5	2	INTERIOR PVC PIPING & CLEANOUT
6	1	TANK VENT
7	2	INTERIOR BAFFLE
8	2	PVC DOUBLE TEE MANIFOLD
9	2	VENT SLEEVE IN BAFFLE
10	-	STRUCTURAL SUPPORT RIB (AS REQ'D)
11	4	LIFTING LUG
12	-	REINFORCED CONCRETE BALLAST LOGS OR INTEGRATED PAD (AS REQ'D)
13	-	TANK ANCHOR STRAP (AS REQ'D)
14	3	24" DIA MANWAY EXTENSION (SS304) W/ SETSCREWS
15	-	CONCRETE APRON (BY OTHERS)
16	3	24" SQ STRIKER PLATE, SS304
17	2	PIPE SUPPORT BRACKET
18	1	NAMEPLATE INDICATING MFG: PARKUSA WWW.PARKUSA.COM 888-611-PARK MODEL GTF3-BG DATE MANUFACTURED
19	-	NOT USED
20	1	ELECTRICAL CONDUIT JUNCTION BOX
21	1	FULL THREAD FLOAT BRACKET
22	1	HIGH GREASE LEVEL SENSOR (NEMA 7)
23	3	24" DIA ACCESS FRAME AND COVER, DUCTILE IRON, FLOOD-TIGHT, BOLTED, SS304
24	1	CONTROL PANEL W/ AUDIBLE & VISUAL ALARM FOR SENSORS (NEMA 4X)
25	1	CABLE & CONDUIT ROUTED TO CONTROL PANEL (BY OTHERS)



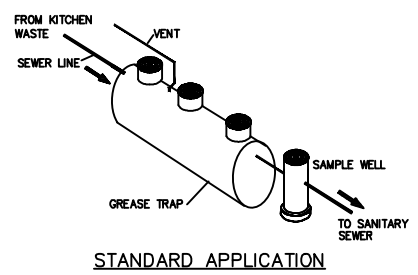
PLAN VIEW



ELEVATION VIEW



GREASE INTERCEPTOR SCHEDULE					
MODEL	NOMINAL CAPACITY (GAL)	DIAMETER, ID (D)	MAX OVERALL LENGTH (L)	INLET FLOWLINE (FL1)	OUTLET FLOWLINE (FL2)
* GTF3-BG-4000	4,000	8'-0"	17'-9"	5'-3"	5'-0"
* GTF3-BG-5000	5,000	8'-0"	20'-7"	5'-3"	5'-0"
* GTF3-BG-6000	6,000	8'-0"	23'-1"	7'-3"	7'-0"
GTF3-BG-7000	7,000	8'-0"	26'-1"	7'-3"	7'-0"
GTF3-BG-8000	8,000	8'-0"	28'-9"	7'-3"	7'-0"
GTF3-BG-9000	9,000	8'-0"	31'-7"	7'-3"	7'-0"
GTF3-BG-10000	10,000	10'-0"	21'-5"	9'-3"	9'-0"
GTF3-BG-11000	11,000	10'-0"	24'-0"	9'-3"	9'-0"
GTF3-BG-12000	12,000	10'-0"	25'-7"	9'-3"	9'-0"
GTF3-BG-13000	13,000	10'-0"	27'-0"	9'-3"	9'-0"
GTF3-BG-14000	14,000	10'-0"	29'-6"	9'-3"	9'-0"



STANDARD APPLICATION

© ParkUSA. ALL RIGHTS RESERVED.

SPECIFICATIONS


TYPICAL APPLICATIONS INCLUDE COMMERCIAL AND INDUSTRIAL FOOD SERVICE KITCHENS WHERE EXCESSIVE GREASE MAY INTERFERE WITH THE PROPER DRAINAGE OF THE SEWER SYSTEM. THE GREASE INTERCEPTOR IS GENERALLY BURIED BELOW GRADE FOR GRAVITY FLOW SEWER SYSTEMS. A SAMPLE WELL IS UTILIZED ON THE OUTLET SIDE FOR SAMPLING BY THE LOCAL WATER AUTHORITY.

TANK: THE TANK SHELL SHALL BE CONSTRUCTED FROM COMPOSITE REINFORCED FIBERGLASS. TANK SHALL HAVE ONE-PIECE CONSTRUCTION AT SHELL, END CAPS, AND BAFFLE.

ACCESS COVER: MANHOLE FRAMES, COVERS OR GRATES ARE MANUFACTURED OF DUCTILE IRON CONFORMING TO ASTM A536, AASHTO M306, & AASHTO M105 STANDARDS. MANHOLE SHALL BE TRAFFIC DUTY.

ENGINEERING DATA

THE GREASE INTERCEPTOR IS STRUCTURALLY & HYDRAULICALLY ENGINEERED TO CONFORM TO REGIONAL PLUMBING CODES RECOMMENDED IN MOST CITIES. CONSULT WITH LOCAL AUTHORITIES FOR SPECIFIC APPLICATION REQUIREMENTS. CONSULT WITH PARK USA FOR EXACT INSTALLATION DIMENSIONS & SHIPPING INFORMATION.



PARK USA
A Northwest Pipe Company

GREASE INTERCEPTOR
(BELOW GRADE) MODEL GTF3-BG 4,000 THRU 14,000

PM	PC	DRN	ENG	DWG. NO.	REV.
				GTF3-BG-WA	A
DATE				9/24	

LAST MODIFIED BY KJU ON 9/11/2024 3:05 PM; LAST PLOTTED ON 9/11/2024 3:05 PM BY VU, KATE; FILE NAME: GTF3-BG-WA.DWG