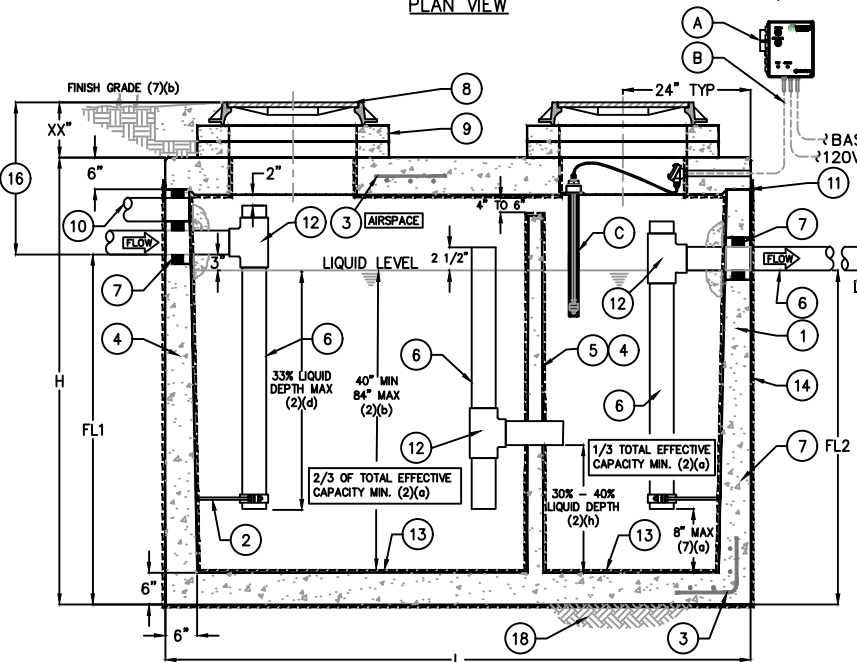
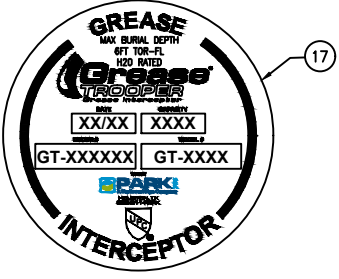


PLAN VIEW



ELEVATION

SERVICE ALERT SYSTEM NOTES		
MARK	QTY	DESCRIPTION
A	1	SERVICE ALERT PANEL, NOTIFIES OF GREASE MAXIMUM CAPACITY w/ AUDIBLE & VISUAL ALARM (NEMA 4X)
B	-	CABLE & CONDUIT ROUTED TO ALARM (BY OTHERS)
C	1	GREASE SENSOR (NEMA 7)



KEY NOTES		
MARK	QTY	DESCRIPTION
1	1	PRECAST CONCRETE GREASE INTERCEPTOR
2	2	GALVANIZED PIPE SUPPORT
3	-	REBAR AS REQ'D
4	-	TAPERED WALL
5	1	MONOLITHIC BAFFLE (4" MIN)
6	2	SCH 40 PVC PIPING (4" OR 6")
7	2	RESILIENT RUBBER BOOT w/ INTERIOR GROUTED
8	2	24" HEAVY DUTY CAST IRON MANHOLE COVER; SEE BSU DETAIL SS-7 (2)(k) & (7)(b) LABELED "GREASE"; DO NOT USE BSU CASTING
9	-	CONCRETE ADJUSTMENT RINGS AS REQ'D
10	1	2" MIN VENT COUPLING (OPTIONAL)
11	1	JOINT SEALED w/ PLASTIC FLEXIBLE GASKET & JOINT WRAP ON EXTERIOR
12	2	VENTED TEE w/ CLEAN OUT (7)(a) OR (7)(h)
13	1	CHEMICAL-PROOF INTERIOR LINING 3mm HDPE
14	1	BITUMASTIC VAPOR BARRIER ON EXTERIOR
15	-	SAMPLE WELL - PARKUSA SWB-15, 15" DIA x REQ'D DEPTH PRECAST CONTACT W/ 15" MANHOLE FRAME & COVER
16	-	MAXIMUM 6'-0" TOR TO FL
17	1	NAMEPLATE INDICATING: MFG: PARKUSA 888-611-PARK WWW.PARKUSA.COM MODEL: GT-FLBS DATE MANUFACTURED
18	1	SAND CUSHION BELOW GREASE INTERCEPTOR

GREASE INTERCEPTOR SCHEDULE								
MODEL NO.	CAPACITY USGal	GREASE CAP. (LBS)	EMPTY WT (LBS)	LENGTH L	WIDTH W	HEIGHT H	INLET FL1	OUTLET FL2
GT-500-FLBS	500	1,200	10,000	7'-10"	4'-4"	6'-0"	4'-1"	3'-10"
GT-750-FLBS	750	1,700	10,000	7'-10"	4'-4"	6'-0"	4'-5"	4'-2"
GT-1000-FLBS	1,000	2,300	13,200	8'-8"	5'-0"	6'-0"	4'-9"	4'-6"
GT-1500-FLBS	1,500	3,500	18,000	9'-0"	6'-0"	7'-0"	5'-9"	5'-6"
GT-2000-FLBS	2,000	4,600	19,000	9'-0"	6'-0"	8'-0"	6'-9"	6'-6"
GT-2500-FLBS	2,500	5,700	27,000	13'-0"	7'-0"	7'-0"	5'-9"	5'-6"
GT-3000-FLBS	3,000	6,900	30,000	13'-0"	7'-0"	8'-0"	6'-9"	6'-6"
GT-3500-FLBS	3,500	8,000	38,500	13'-0"	7'-0"	8'-6"	7'-3"	7'-0"
GT-4000-FLBS	4,000	9,240	38,500	16'-0"	8'-6"	7'-0"	5'-9"	5'-6"

OTHER SIZES ARE AVAILABLE. CONTACT US FOR MORE INFORMATION.

© ParkUSA. ALL RIGHTS RESERVED.

General Information
Typical applications include commercial and industrial food service kitchens where excessive grease may interfere with the proper drainage of the sewer system. The grease interceptor is generally buried below grade for gravity flow sewer systems. A sample well or cleanout is utilized on the outlet side for sampling by the local water authority.

Specifications
Concrete
Design strength of 5000 PSI at 28 days. Unit is of monolithic construction at floor, first stage of wall and baffle with sectional riser to required depth. Monolithic baffle required, slide-in type is not accepted.

Reinforcement
Grade 60 reinforced with steel rebar conforming to ASTM A615 on required centers or equal.

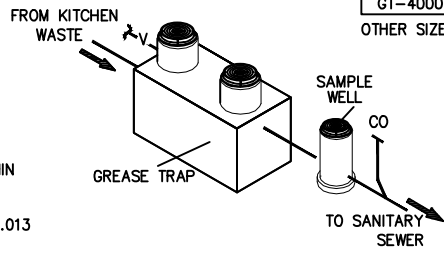
Manways
Manhole frames, covers or grates are manufactured of grey cast iron conforming to ASTM A48-76 Class 30. Manhole shall be nominal 24 inch diameter and be traffic duty.

- NOTE:**
1. REFERENCE SIZING REQUIREMENTS WITHIN THE STANDARD SPECIFICATION
 2. (#)(x) REFERS TO SECTION IN FLORIDA ADMINISTRATIVE CODE CHAPTER 64E-6.013 (1)(p)
 3. REFERENCE BONITA SPRINGS UTILITIES DWG #SS-11.DWG FOR STANDARD SPECIFICATION DRAWINGS.

Engineering Data
The grease interceptor is structurally & hydraulically engineered to conform to UPC/IPC and regional plumbing codes. Consult with local authority for specific application requirements.


Shop drawings shall include complete structural & buoyancy calculations certified by a licensed professional engineer upon request.

Consult with ParkUSA for exact excavation dimensions & shipping information.



MUNICIPALITIES:

- BONITA SPRINGS, FL



GREASE INTERCEPTOR SERIES GT
500 THRU 4000 GALLON CAPACITY

PM	PC	DRN	ENG	DWG. NO.	REV.
.	.	KV	CE		
DATE 06/24				GT-01-FLBS-WA	A

LAST MODIFIED BY: KYU ON 6/26/2024 4:51 PM; LAST PLOTTED ON 6/26/2024 4:51 PM BY: YU, KATE; FILE NAME: GT-01-FLBS-WA.DWG