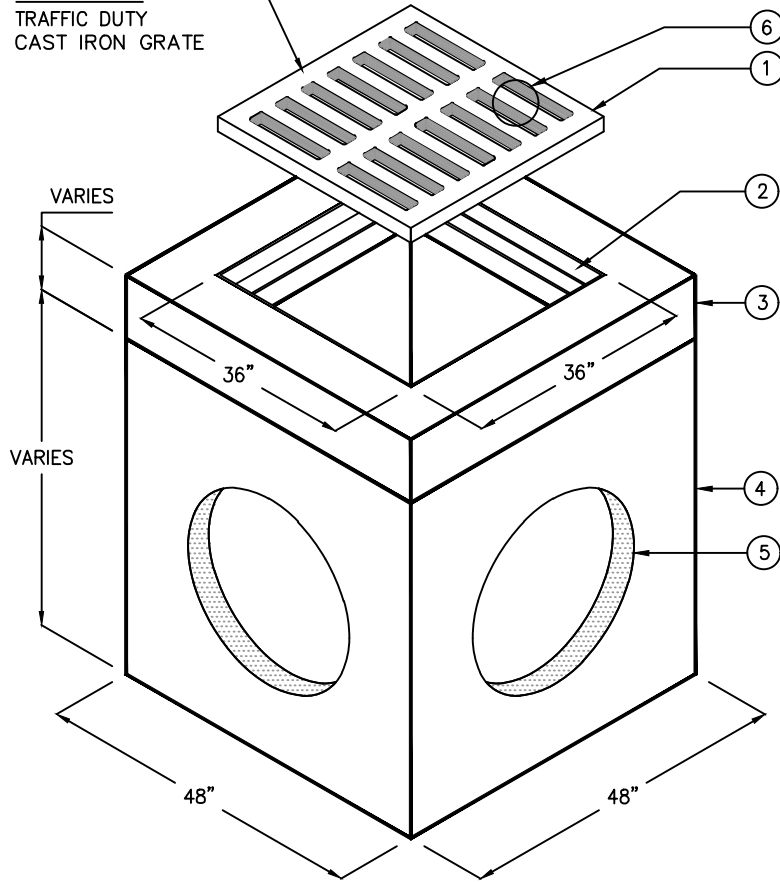
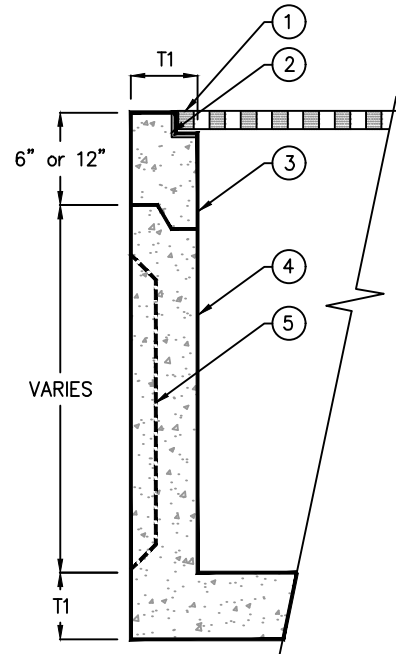
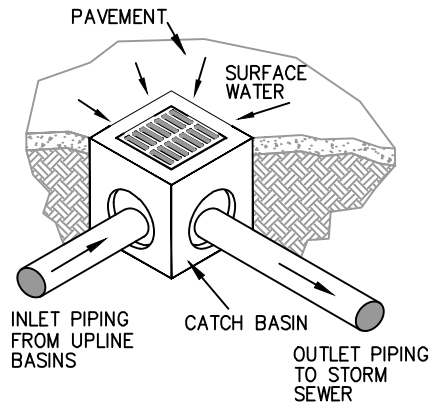


CATCH BASIN  
TRAFFIC DUTY  
CAST IRON GRATE



ISOMETRIC



PARTIAL SECTION

KEYED NOTES		
MARK	QTY	DESCRIPTION
1	1	37-1/2"x37-1/2"x 1-1/2" THK GRATE w/ STEEL FRAME
2	1	CAST-IN STEEL FRAME
3	1	PRECAST CONCRETE EXTENSION SECTION
4	1	PRECAST CONCRETE BASIN SECTION
5	4	THIN WALL BLOCKOUT ON ALL 4 SIDES
6	1	NAMEPLATE MFG: PARKUSA 888-611-PARK WWW.PARKUSA.COM DATE MANUFACTURED MODEL GIVC-33



APPROVED FOR  
CORPUS CHRISTI, TX

© ParkUSA. ALL RIGHTS RESERVED.

SPECIFICATIONS



CONCRETE : CLASS I/II CONCRETE WITH OF DESIGN STRENGTH OF 4500 PSI AT 28 DAYS. UNIT IS OF MONOLITHIC CONSTRUCTION AT FLOOR AND FIRST STAGE OF WALL WITH SECTIONAL RISER TO REQUIRED DEPTH. RATED FOR H-20 LOADING.

REINFORCEMENT: GRADE 60 REINFORCED. NO. 4 STEEL REBAR TO CONFORM TO ASTM A615 ON REQUIRED CENTERS OR EQUAL.

C.I. CASTINGS: CAST IRON FRAMES AND GRATES ARE MANUFACTURED OF GREY CAST IRON CONFORMING TO ASTM A48-76 CLASS 30.



TYPE-C GRATE INLET  
MODEL GIVC-33

PM	PC	DRN	ENG	DWG. NO.	REV.
				GIVC-33	A
DATE					

PLOTTED ON 4/22/2024 11:57 AM BY: Vu, Kate, D:\File replacement website\GIVC-33