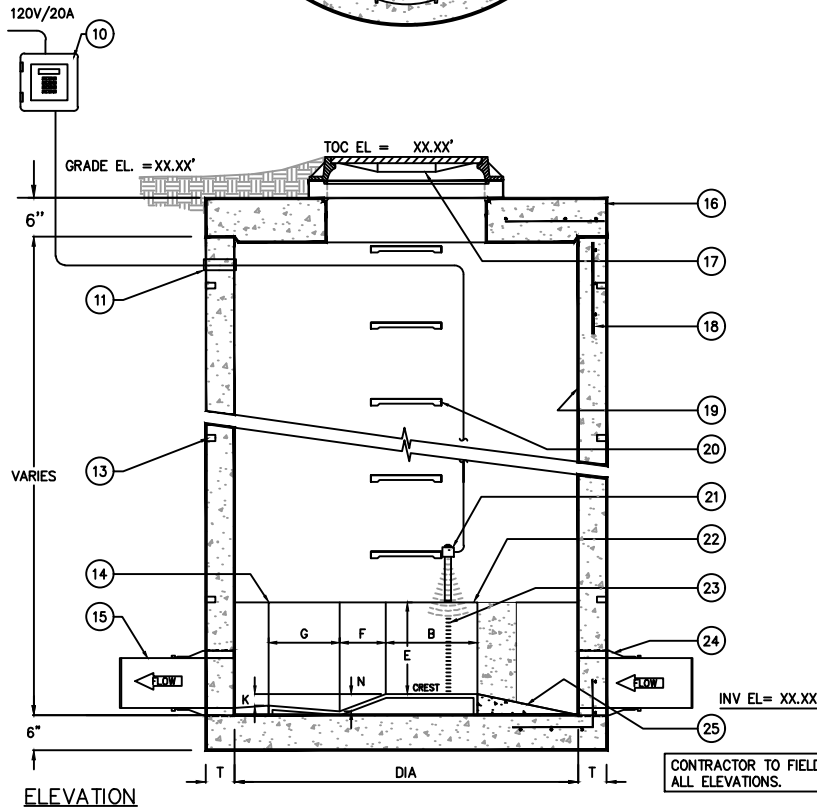


KEYED NOTES		
MARK	QTY	DESCRIPTION
1	1	DIVERGING SECTION
2	1	CONVERGING SECTION
3	2	ULTRASONIC FLOW METER TRANSDUCER
4	2	FLUME THROAT SECTION
5	1	45° WING WALL
6	1	CONTROL PANEL
7	1	HATCHWAY
8	2	WASTEWATER SOURCE
9	2	TO SEWER
10	1	REMOTE ULTRASONIC FLOW TRANSMITTER MOUNTED IN NEMA 4X ENCLOSURE
11	1	2" PVC CONDUIT ELEC SLEEVE
12	1	NAMEPLATE INDICATING: MFG: ParkUSA 888-611-PARK MODEL: FLP DATE MANUFACTURED
13	1	LIFTING LUGS AS REQUIRED
14	1	CONCRETE PLATFORM
15	1	TYPICAL PIPE BY OTHERS
16	1	PRECAST CONCRETE SLAB TOP SEALED w/ PLASTIC FLEXIBLE GASKET MATERIAL
17	1	24" DIA DUCTILE IRON HINGED ACCESS COVER MARKED "WASTEWATER FLUME ASSEMBLY"
18	2	#5 REBAR @ 11" O.C.E.W. (1) MAT FOR TOP SLAB BAR BENDING & PLACEMENT SHALL COMPLY w/ LATEST ACI STANDARDS
19	1	INTERIOR LINED w/ CORROSION PROTECTION LINER
20	1	OSHA APPROVED STEPS AT 16" O.C.
21	1	ULTRASONIC FLOW METER TRANSDUCER w/ SS MTG BRACKET
22	1	PARSHALL MANHOLE FLUME CONSTRUCTED OF CORROSION RESISTANT MATERIALS, WITH STAFF GAUGE
23	1	STAFF GAUGE
24	1	RESILIENT PIPE CONNECTION (PRESS-SEAL) TYP-2
25	1	SLOPE 1/4



CONTRACTOR TO FIELD VERIFY ALL ELEVATIONS.

SPECIFICATIONS

CONCRETE: CLASS I/II CONCRETE WITH DESIGN STRENGTH OF 4500 PSI AT 28 DAYS. UNIT IS OF MONOLITHIC CONSTRUCTION AT FLOOR, FIRST STAGE OF WALL AND BAFFLE WITH SECTIONAL RISER TO REQUIRED DEPTH.

REINFORCEMENT: GRADE 60 REINFORCED WITH STEEL REBAR CONFORMING TO ASTM A615 ON REQUIRED CENTERS OR EQUAL. STRUCTURAL DESIGN IS BASED ON AASHTO HS-20 LOADING.

ACCESS COVER: THE ACCESS COVER BE MINIMUM 24" DIAMETER AND BE CONSTRUCTED OF DUCTILE IRON, COVER SHALL BE LOCKABLE AND BE HINGED WITH A SAFETY BLOCKING SYSTEM. THE COVER SHALL BE H20 TRAFFIC DUTY AND HAVE NAMEPLATE INDICATING "WASTEWATER FLUME ASSEMBLY".

ENGINEERING DATA

MANHOLE STATION IS STRUCTURALLY AND HYDRAULICALLY ENGINEERED CONFORMING TO UNIFORM PLUMBING CODE AND ASTM C-478.

FIELD EXCAVATION AND PREPARATION SHALL BE COMPLETED PRIOR TO DELIVERY OF THE SEPTIC TANK. USE DIMENSIONAL DATA AS SHOWN.

MODEL	FLUME SIZE	DIA	MAXIMUM FLOW RATE GPM MGD	PARSHALL FLUME DIMENSIONS (in)											
				W	A	B	C	D	E	F	G	K	N	P	T
FLP-01	1"	48"	83 0.12	1	14- ¹ / ₄	14	3- ³ / ₈	6- ¹ / ₂	20	3	8	3	1- ¹ / ₈	20	5
FLP-02	2"	48"	208 0.30	2	16- ³ / ₈	16	5- ³ / ₈	8- ¹ / ₂	14	4- ¹ / ₂	10	3	1- ¹ / ₈	28	5
FLP-03	3"	60"	507 0.73	3	18- ³ / ₈	18	7	10- ³ / ₈	24	6	12	1	2- ¹ / ₈	30	6
FLP-06	6"	96"	1,736 2.50	6	24- ³ / ₈	24	15- ¹ / ₂	15- ³ / ₈	24	12	24	3	4- ¹ / ₂	36	6
FLP-09	9"	96"	4,027 5.80	9	34- ³ / ₈	34	15	22- ³ / ₈	30	12	18	3	4- ¹ / ₂	42	6
FLP-12	12"	144"	7,226 10.41	12	54-0	53	24	33-0	36	24	36	3	9-0	42	8
FLP-18	18"	144"	11,041 15.90	18	57-0	56	30	40- ³ / ₈	36	24	36	3	9-0	46	8

© ParkUSA. ALL RIGHTS RESERVED.



WASTEWATER MONITORING MANHOLE PARSHALL MODEL FLP

PM	PC	DRN	ENG	DWG. NO.	REV.
				FLP-2	A
DATE	2023				

CREATED ON 4/19/2024 BY -----
LAST MODIFIED ON 4/22/2024 12:01 PM BY: kva

PLOTTED ON 4/22/2024 12:01 PM BY: kva, D:\File replacement website\FLP-2