

NAMEPLATE INDICATING:
MFG: ParkUSA
888-611-PARK
WWW.PARK-USA.COM
MODEL: CV-01
DATE MANUFACTURED

GALVANIZED STEEL
BAR GRATING

PLAN VIEW

SPECIFICATIONS

CONCRETE :
Class I/II concrete with of design strength of 4500 PSI at 28 days. Unit is of monolithic construction at floor and first stage of wall with sectional riser to required depth. Rated for H-20 Loading.

REINFORCEMENT :
Grade 60 reinforced. No. 4 steel rebar to conform to ASTM A615 on required centers or equal.

GRATING :
All steel fabrication shall be in accordance to AWA D1.1. Steel shall be ASTM A36 carbon steel, and hot-dipped galvanized after fabrication in accordance to ASTM A123. Grate shall be pedestrian rated.

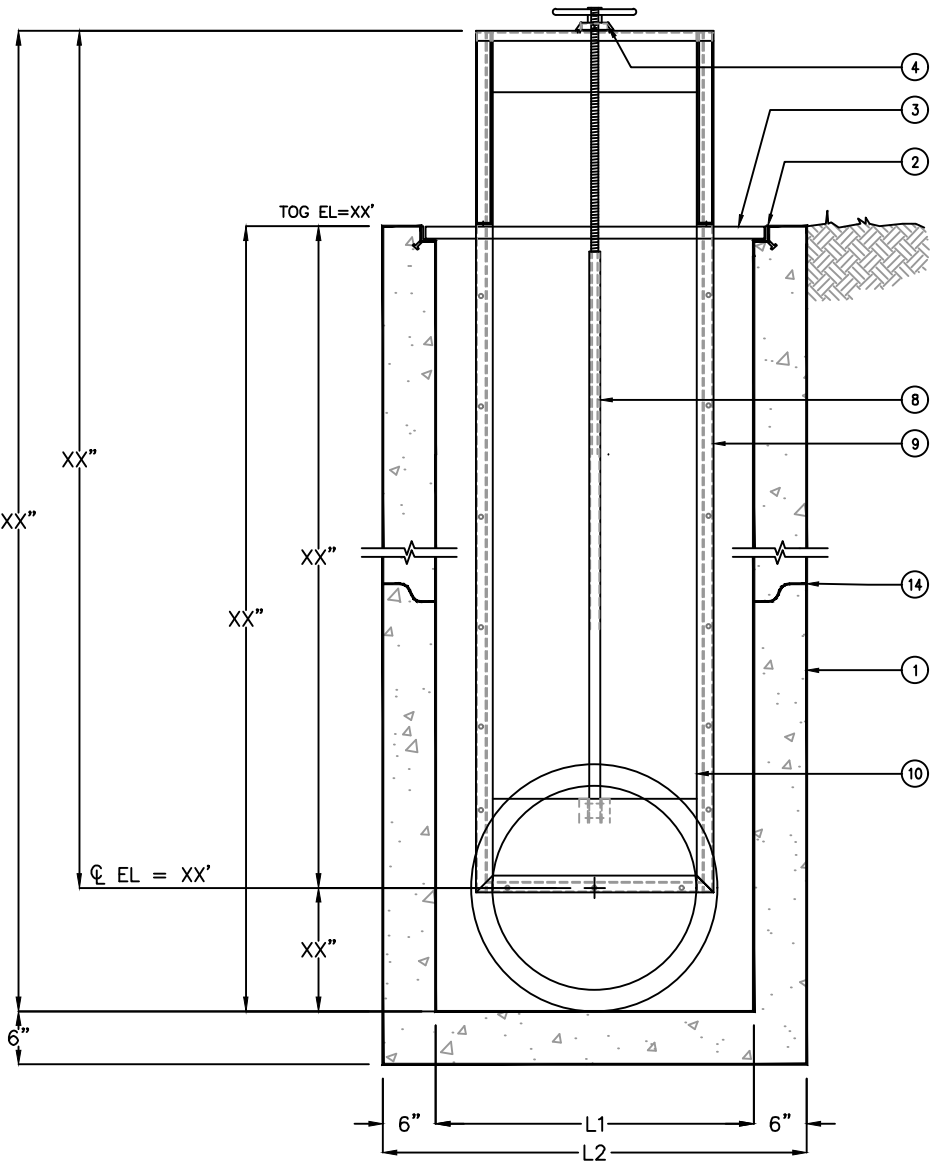
GATE VALVE :
Slide gate valve shall be cast iron w/ machined seats, galvanized steel frame w/ flange back for mounting on flat wall, carbon steel stem, acme type threads, bronze nut, and hand wheel operator.

ALL PIPING TO BE SEALED
w/ NON-SHRINK GROUT
(BY OTHERS)

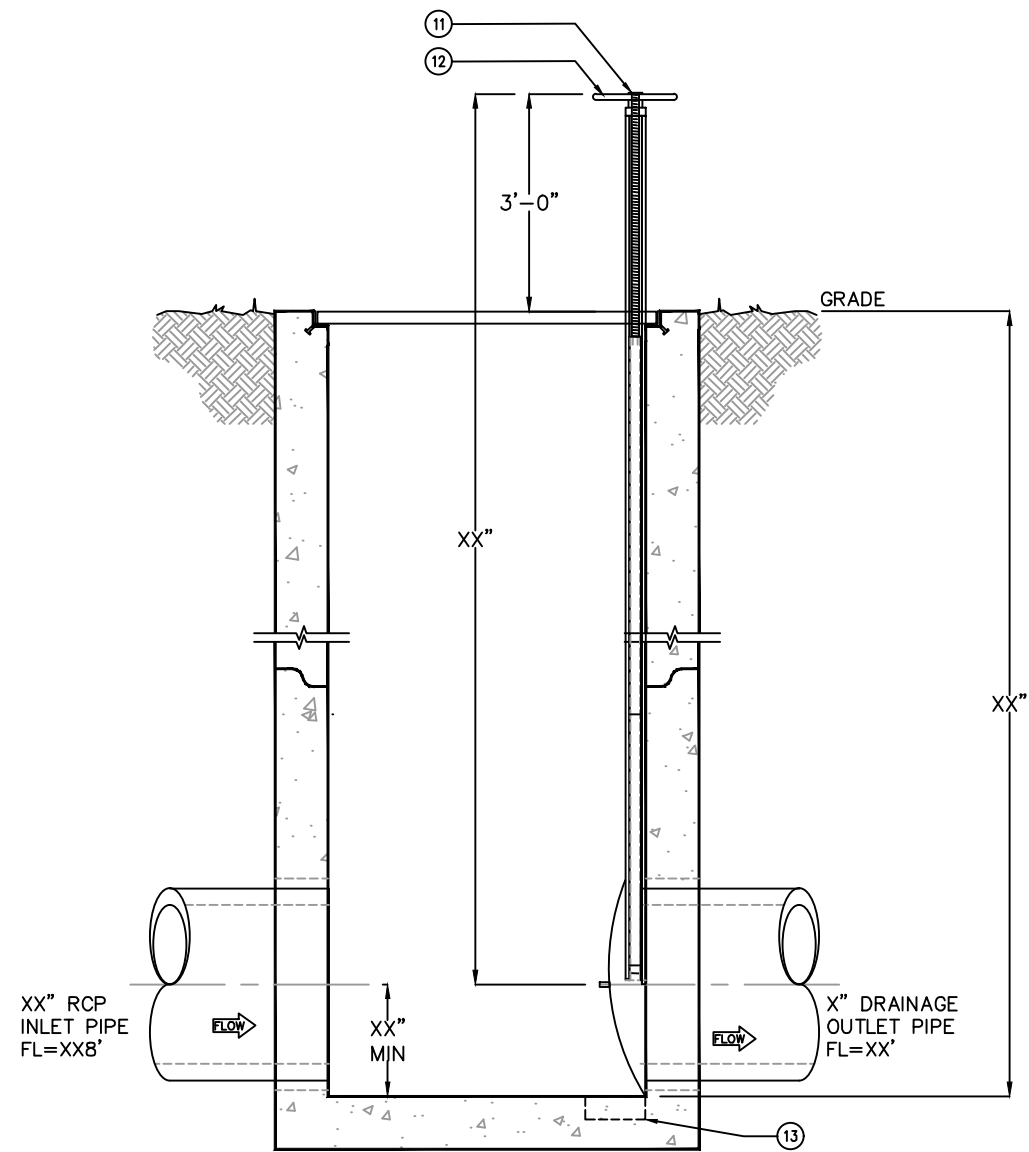
ALL PIPING
BY OTHERS



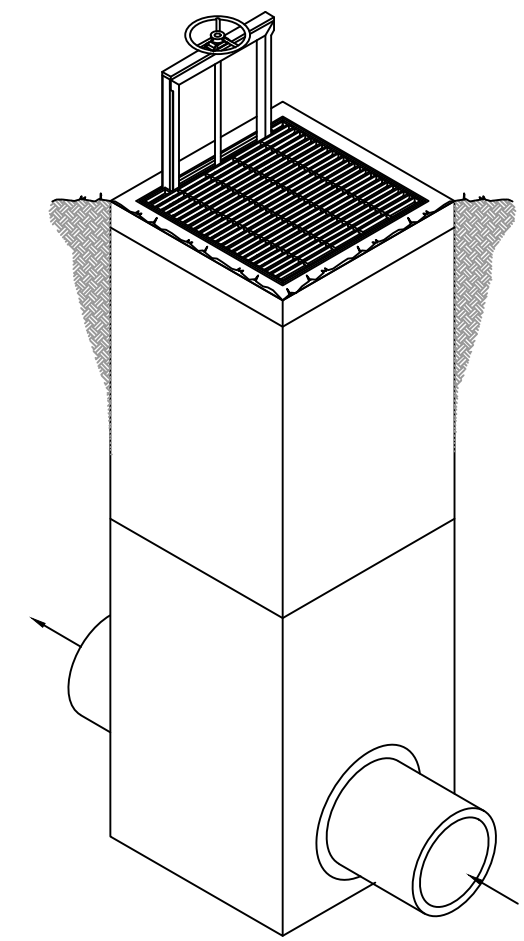
KEYED NOTES		
MARK	QTY	DESCRIPTION
1	1	PRECAST CONCRETE BASIN
2	1	GALVANIZED STEEL FRAME w/ EMBED ANCHORS
3	1	GALVANIZED STEEL BAR GRATING
4	1	ENCLOSED BEARING
5	1	XX" x XX" DIA BLOCKOUT
6	1	XX" DRAINAGE PIPE
7	1	XX" INLET PIPE
8	1	ACME THREADED ROD
9	1	GALVANIZED STEEL FRAME
10	1	HEAVY DUTY SLIDE GATE VALVE
11	1	RISING STEM
12	1	HANDWHEEL
13	1	RECESS BLOCKOUT FOR VALVE
14	1	SECTIONAL JOINT SEALED w/ RAM-NEK



SECTION A-A
FRONT ELEVATION



SECTION B-B
LEFT ELEVATION



ISOMETRIC

PLOTTED ON 6/4/2024 3:44 PM BY Vu, Kats, D:\File replacement website CV-01

© ParkUSA. ALL RIGHTS RESERVED.



CONTAINMENT VALVE
ASSEMBLY MODEL CV

PM	PC	DRN	ENG	DWG. NO.	REV.
				CV-01	A
DATE					

CREATED ON 4/19/2024 BY ...
LAST MODIFIED ON 4/22/2024 12:13 PM BY kvu