

CMPR-XXX-XXX

| SEPARATOR SIZE | |
|-------------------|------------|
| 100 | 100 GALLON |
| 150 | 150 GALLON |
| 200 | 200 GALLON |
| 250 | 250 GALLON |
| 300 | 300 GALLON |
| ETC... | |
| MAXIMUM FLOW RATE | |
| O10 | 10 GPM |
| O15 | 15 GPM |
| O20 | 20 GPM |
| O25 | 25 GPM |
| O30 | 30 GPM |

PLAN VIEW

NAMEPLATE INDICATING:
MFG: PARKUSA
888-611-PARK
WWW.PARKUSA.COM
MODEL: CMPR
DATE MANUFACTURED

APPLICATIONS

- MAINTENANCE WASHDOWN & GARAGES
- GOLF COURSES
- EQUIPMENT & TRANSPORTATION WASHDOWN FACILITIES
- CARWASHES
- STORMWATER RUNOFF
- SERVICE STATION FUEL DEPOTS
- MANUFACTURING FACILITY EFFLUENT WATER
- REMEDIATION WATER CLEANUP
- GENERAL INDUSTRY

| SAND-OIL INTERCEPTOR SCHEDULE | | | | | | | | |
|-------------------------------|----------------|---------------------|-----------------|----------------|-------|-----------|-----------|------------|
| MODEL NO. | CAPACITY USGal | OIL SPILL CAP (GAL) | FLOW RATE (GPM) | EMPTY WT (LBS) | DIA D | HEIGHT H1 | INLET FL1 | OUTLET FL2 |
| CMPR-100 | 100 | 50 | 10 | 3,250 | 44" | 54" | 39" | 36" |
| CMPR-150 | 150 | 75 | 15 | 3,950 | 44" | 70" | 55" | 52" |
| CMPR-200 | 200 | 100 | 20 | 4,300 | 44" | 78" | 63" | 60" |
| CMPR-250 | 250 | 125 | 25 | 6,700 | 58" | 60" | 41" | 38" |
| CMPR-300 | 300 | 150 | 30 | 7,000 | 58" | 62" | 47" | 44" |

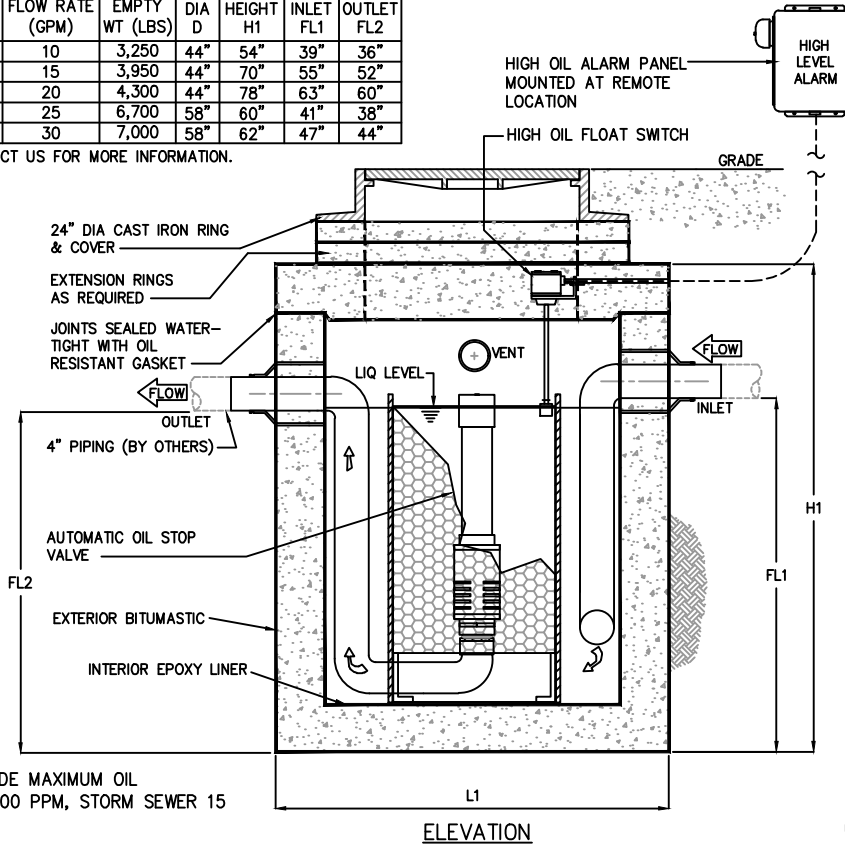
OTHER SIZES ARE AVAILABLE. CONTACT US FOR MORE INFORMATION.

GUARANTEED PERFORMANCE

A certified performance analysis utilizing a proprietary computer program will accurately model systems to ensure that their effluent qualities meet the required discharge criteria (EPA and Local Codes)

Influent oily water contains oil droplets of many different sizes. These droplets rise at different rates. Park utilizes a statistical program that divides the droplets into ranges of sizes and calculates the rise rates of each range. This calculation determines which droplets the separator can capture.

Contact our Engineering Dept. @ 888-611-PARK for a free performance evaluation.



ELEVATION

GUARANTEED PERFORMANCE FOR CODE MAXIMUM OIL CONCENTRATION (SANITARY SEWER 100 PPM, STORM SEWER 15 PPM)

SPECIFICATIONS

CONCRETE: CLASS I/II CONCRETE WITH OF DESIGN STRENGTH OF 4500 PSI AT 28 DAYS. UNIT IS OF MONOLITHIC CONSTRUCTION AT FLOOR AND FIRST STAGE OF WALL WITH SECTIONAL RISER TO REQUIRED DEPTH. RATED FOR H-20 LOADING.

REINFORCEMENT: GRADE 60 REINFORCED. NO. 4 STEEL REBAR TO CONFORM TO ASTM A615 ON REQUIRED CENTERS OR EQUAL. BAR BENDING AND PLACEMENT SHALL CONFORM THE LATEST ACI STANDARDS.

C.I. CASTINGS: CAST IRON RINGS AND GRATES ARE MANUFACTURED OF GREY CAST IRON CONFORMING TO ASTM A48-76 CLASS 30.

ENGINEERING DATA

INTERCEPTOR IS STRUCTURALLY AND HYDRAULICALLY ENGINEERED CONFORMING TO UNIFORM PLUMBING CODE. NOMINAL TOTAL LIQUID CAPACITY AND OIL HOLDING CAPACITY AS INDICATED. RECOMMENDED FOR FLOW RATES OF 10 TO 30 GPM (CONSULT PARK FOR PROPER SIZING). MANUFACTURER SHALL SUBMIT PERFORMANCE CALCULATIONS FOR OIL & WATER SEPARATION CERTIFIED BY A LICENSED PROFESSIONAL ENGINEER. FIELD EXCAVATION AND PREPARATION SHALL BE COMPLETED PRIOR TO DELIVERY OF INTERCEPTOR. USE DIMENSIONAL DATA AS SHOWN.



© ParkUSA. ALL RIGHTS RESERVED.



SAND-OIL SEPARATOR
MODEL CMPR - 100 THRU 300 GALLONS

| | | | | | |
|------|----|-----|-----|-----------|------|
| PM | PC | DRN | ENG | DWG. NO. | REV. |
| | | | | CMPR-1-WA | A |
| DATE | | | | 9/24 | |

LAST MODIFIED BY KJU ON 9/4/2024 1:06 PM. LAST PLOTTED ON 9/4/2024 1:06 PM BY NU. KATE. FILE NAME: CMPR-1-WA.DWG