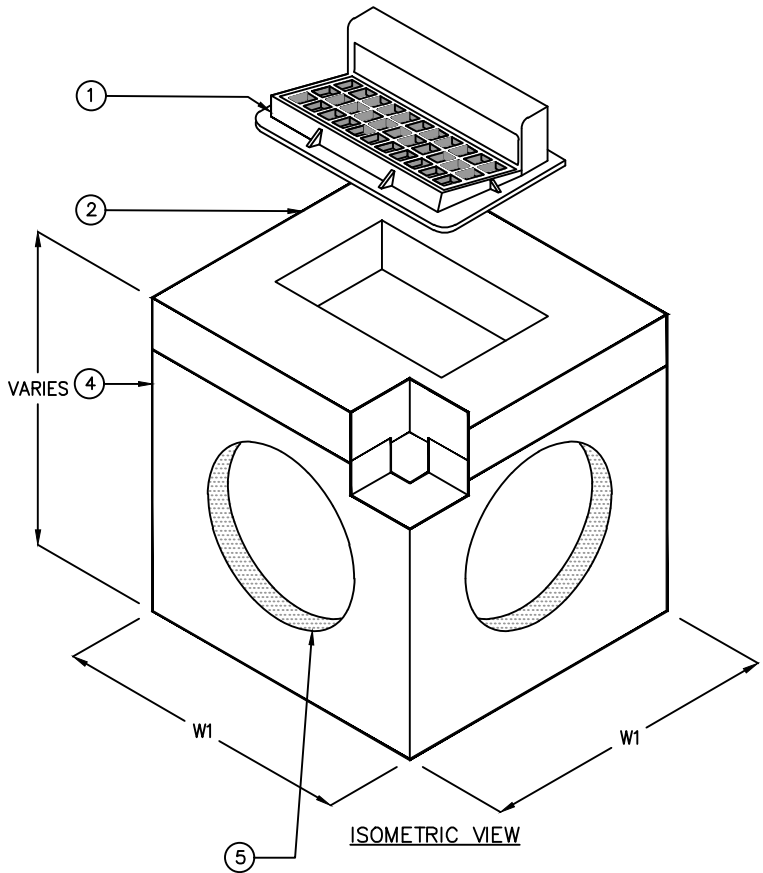
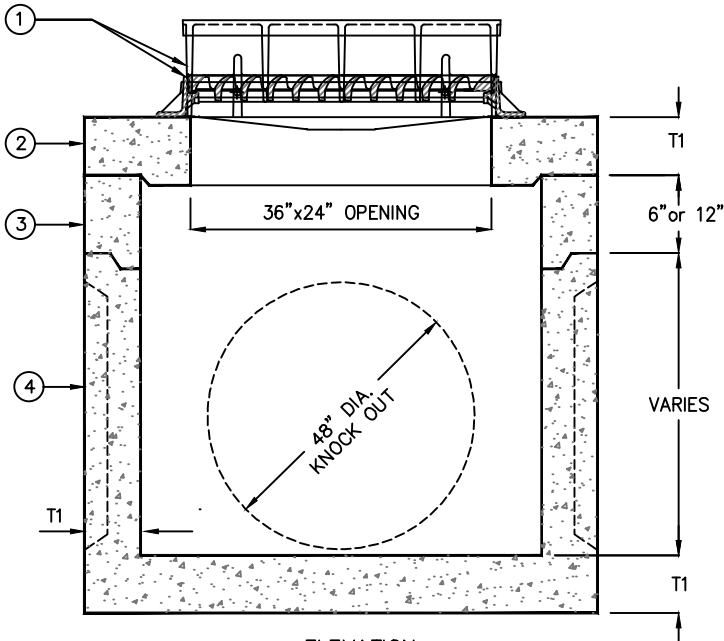


PLAN VIEW

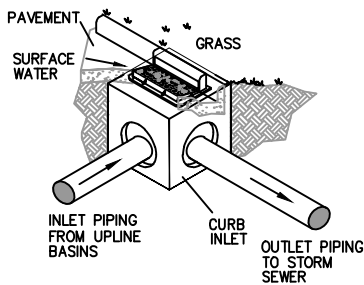


ISOMETRIC VIEW



ELEVATION

KEYED NOTES		
MARK	QTY	DESCRIPTION
1	1	36"x24" HD CAST IRON FRAME & GRATE
2	1	LID SECTION
3	1	RISER SECTION
4	1	BASIN SECTION
5	2	48" DIAMETER KNOCK OUT. (WILL FIT UP TO 36" RCP.)



APPROVED FOR NORTH TEXAS

MODEL	W1	W2	L1	T1
CIL-44	5'	4'	2'6"	6"
CIL-66	7'	6'	3'6"	6"

**SPECIFICATIONS**

**CONCRETE :** CLASS I/II CONCRETE WITH OF DESIGN STRENGTH OF 4500 PSI AT 28 DAYS. UNIT IS OF MONOLITHIC CONSTRUCTION AT FLOOR AND FIRST STAGE OF WALL WITH SECTIONAL RISER TO REQUIRED DEPTH. RATED FOR H-20 LOADING.

**REINFORCEMENT:** GRADE 60 REINFORCED. NO. 4 STEEL REBAR TO CONFORM TO ASTM A615 ON REQUIRED CENTERS OR EQUAL.

**C.I. CASTINGS:** CAST IRON FRAMES AND GRATES ARE MANUFACTURED OF GREY CAST IRON CONFORMING TO ASTM A48-76 CLASS 30.



© ParkUSA. ALL RIGHTS RESERVED.



CURB INLET  
MODEL - CIL1-103

PM	PC	DRN	ENG	DWG. NO.	REV.
				CIL1-103	A
DATE				2023	

PLOTTED ON 4/19/2024 3:34 PM BY Vu. Kate. C:\Users\vu\Desktop\file replacement website\CIL1-103