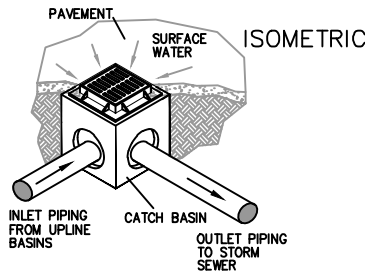
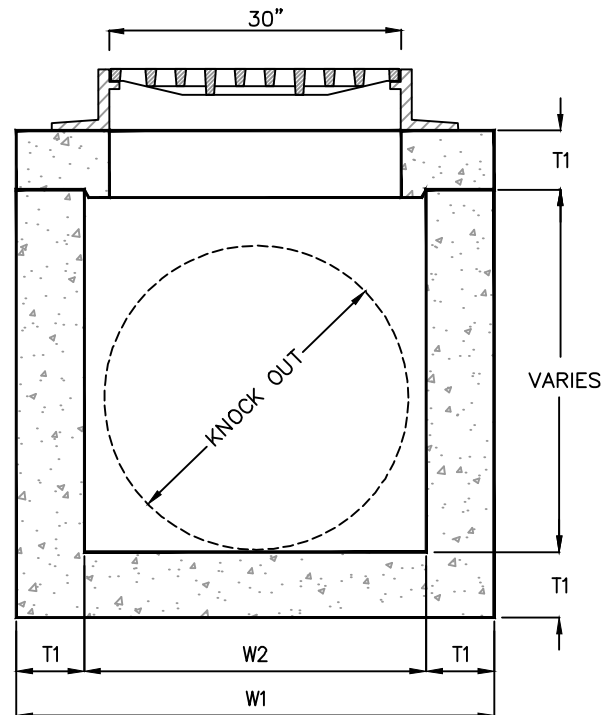


GRATE SCHEDULE	
	GRATE = 200 lbs OPEN AREA = 489 in ² MODEL No. V4880-1
	GRATE = 240 lbs OPEN AREA = 434 in ² MODEL No. V4880-3
	GRATE = 270 lbs OPEN AREA = 387 in ² MODEL No. V4880-4



NOTE:
RISER SECTION AVAILABLE IN 6" TO 12" DEPTHS.



MODEL	W1	W2	H1	H2	T1	K.O.	GRATE SIZE	WEIGHT LBS
CBTA-36	48"	36"	42"	36"	6"	36"	30"X30"	4,585
CBTA-48	60"	48"	54"	48"	6"	48"	30"X30"	8,900
CBTA-60	72"	60"	66"	60"	6"	60"	30"X30"	13,650
CBTA-72	84"	72"	78"	72"	6"	72"	30"X30"	19,000
CBTA-84	96"	83"	78"	72"	6"	84"	30"X30"	23,000

SECTION

© ParkUSA. ALL RIGHTS RESERVED.



SPECIFICATIONS

- CONCRETE :** Class I/II concrete with of design strength of 4500 PSI at 28 days. Unit is of monolithic construction at floor and first stage of wall with sectional riser to required depth. Rated for H-20 Loading.
- REINFORCEMENT:** Grade 60 reinforced with steel rebar to conform to ASTM A615 on required centers or equal.
- C.I. CASTINGS:** Cast iron frames and grates are manufactured of grey cast iron conforming to ASTM A48-76 Class 30.



TYPE-A GRATE INLET
MODEL CBTA - 36" THRU 84"

PM	PC	DRN	ENG	DWG. NO.	REV.
DATE	2023			CBTA3684	A

PLOTTED ON 4/19/2024 3:30 PM BY Vu. Kate. C:\Users\vu\Desktop\Files replacement website\CBTA3684