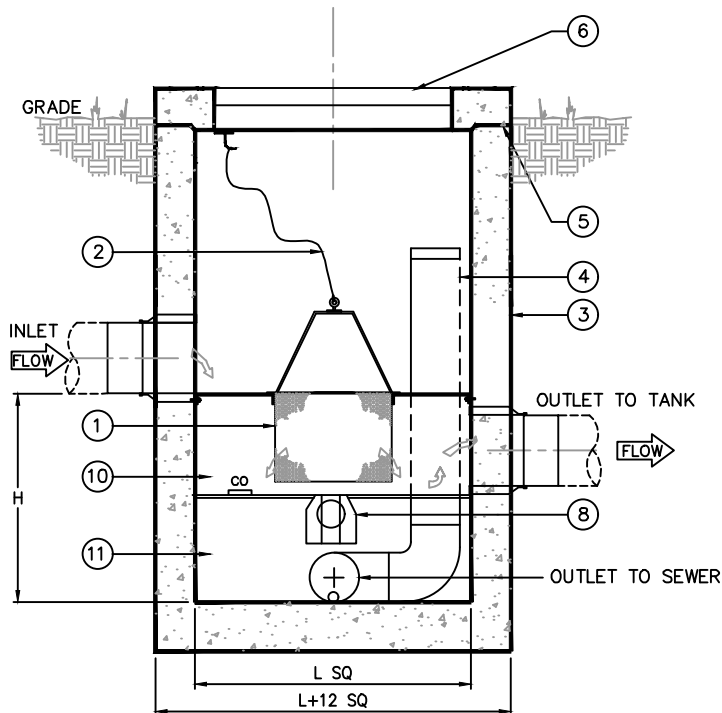


TOP VIEW



ELEVATION



NAME PLATE

KEYED NOTES		
MARK	QTY	DESCRIPTION
1	1	SCREEN BASKET
2	1	SS RETRIEVAL CHAIN
3	1	PRECAST CONCRETE VAULT
4	1	OVERFLOW PORT
5	1	JOINTS TO BE SEALED W/ PLASTIC RAM-NEK GASKET
6	1	30" SQ GALV HATCHWAY H-20 RATED
7	1	RESILIENT RUBBER PIPE CONNECTION 'PRESS-SEAL' (TYP.)
8	1	FIRST FLUSH VALVE
9	1	ORIFICE
10	1	FILTERED WATER CHAMBER
11	1	FIRST FLUSH CHAMBER
12	1	NAMEPLATE MFG: PARKUSA 888-611-PARK WWW.PARKUSA.COM MODEL: BFC-1 DATE MANUFACTURED

MODEL	NOMINAL FLOW (GPM)	FIRST FLUSH (GAL)	INLET OUTLET SIZE	DISCHARGE SIZE	L" X W"	H"
BFC-03	50	16	3"	2"	30" X 30"	24"
BFC-04	100	16	4"	3"	30" X 30"	24"
BFC-06	300	30	6"	4"	36" X 36"	24"
BFC-08	650	67	8"	4"	48" X 48"	24"
BFC-10	1200	67	10"	6"	48" X 48"	24"
BFC-12	1900	67	12"	6"	48" X 48"	24"
BFC-15	3400	120	15"	8"	60" X 60"	24"



APPLICATIONS:  
TYPICAL APPLICATIONS FOR THE MODEL BFC INCLUDE:

- RAIN HARVESTING
- FIRE PROTECTION
- EVAPORATIVE COOLING TOWER MAKE-UP
- PROCESS WATER
- NON-POTABLE WATER
- SITE IRRIGATION

FEATURES:

- SELF-CLEANING FILTER
- 3" THRU 15" CONNECTIONS
- MAX 50,000 SQ/FT

SPECIFICATIONS

- CONCRETE: CLASS I/II CONCRETE WITH DESIGN STRENGTH OF 4500 PSI AT 28 DAYS. UNIT IS OF MONOLITHIC CONSTRUCTION AT FLOOR AND FIRST STAGE OF WALL WITH SECTIONAL RISER TO REQUIRED DEPTH.
- REINFORCEMENT: GRADE 60 REINFORCED WITH STEEL REBAR CONFORMING TO ASTM A615 AND ASTM-C478 ON REQUIRED CENTERS OR EQUAL.
- COVER & FRAME: ALL STEEL FABRICATION SHALL BE IN ACCORDANCE TO AWA D1.1. STEEL SHALL BE ASTM A36 CARBON STEEL, AND HOT-DIPPED GALVANIZED AFTER FABRICATION IN ACCORDANCE TO ASTM A123.

ENGINEERING DATA

INDUSTRIAL DUTY, HIGH EFFICIENCY, SELF-CLEANING, BELOW GROUND FILTRATION SYSTEM. THIS MODEL SHIPS WITH A CAST IRON LID FOR VEHICLE LOADING APPLICATIONS.



© ParkUSA. ALL RIGHTS RESERVED.



BASKET FILTER  
MODEL BCF

PM	PC	DRN	ENG	DWG. NO.	REV.
.	.	.	.	BCF-1	A
DATE				2023	

PLOTTED ON 4/18/2024 2:33 PM BY Vu. Kate. C:\Users\vu\Desktop\view soft\BFC-1