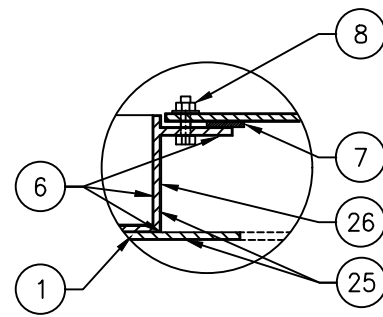
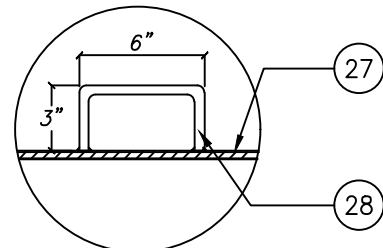


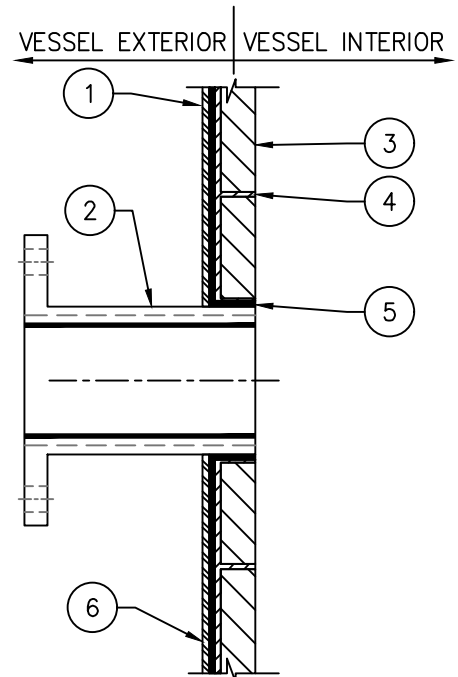
DETAIL-A



DETAIL-B

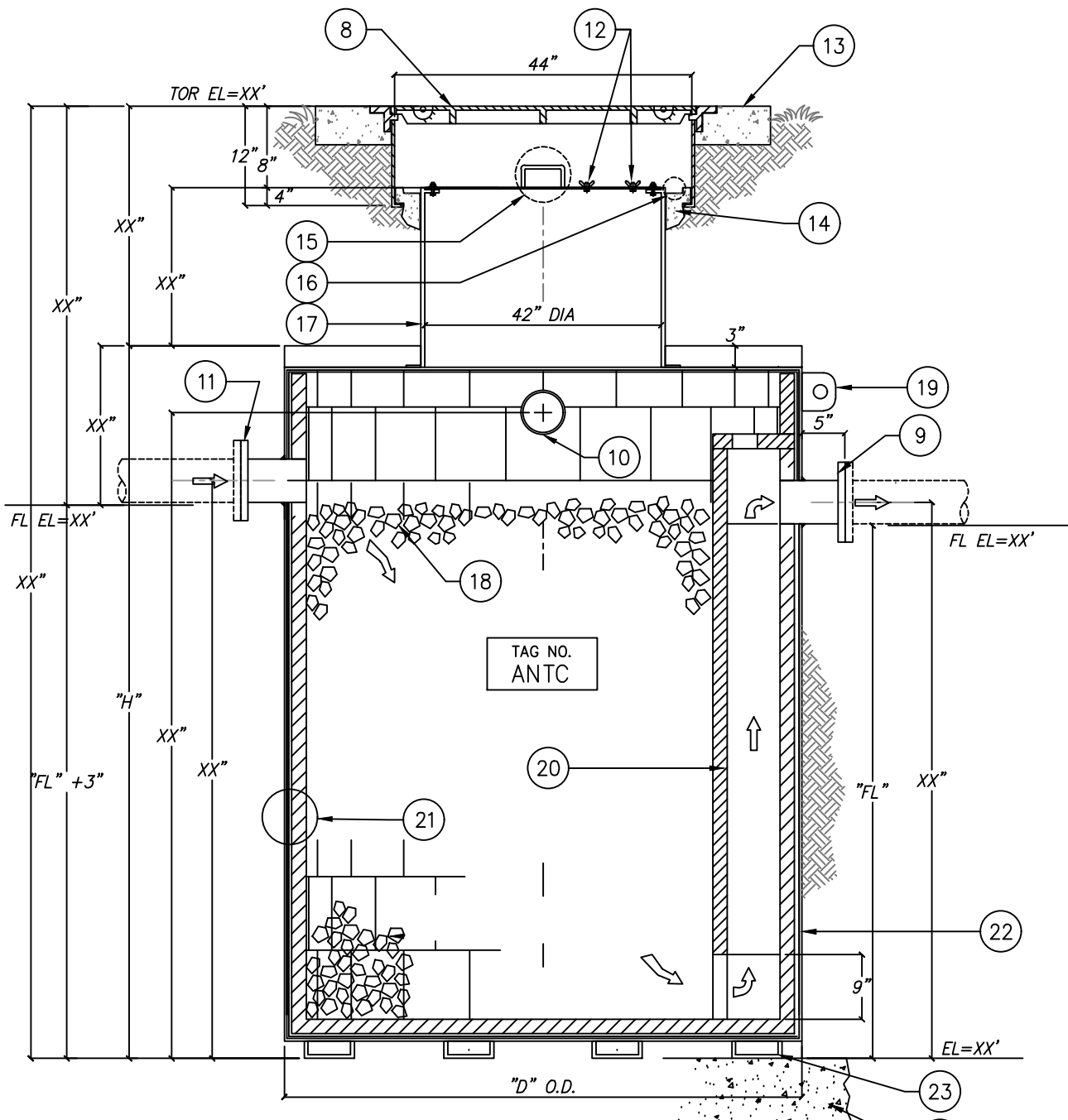


DETAIL-C

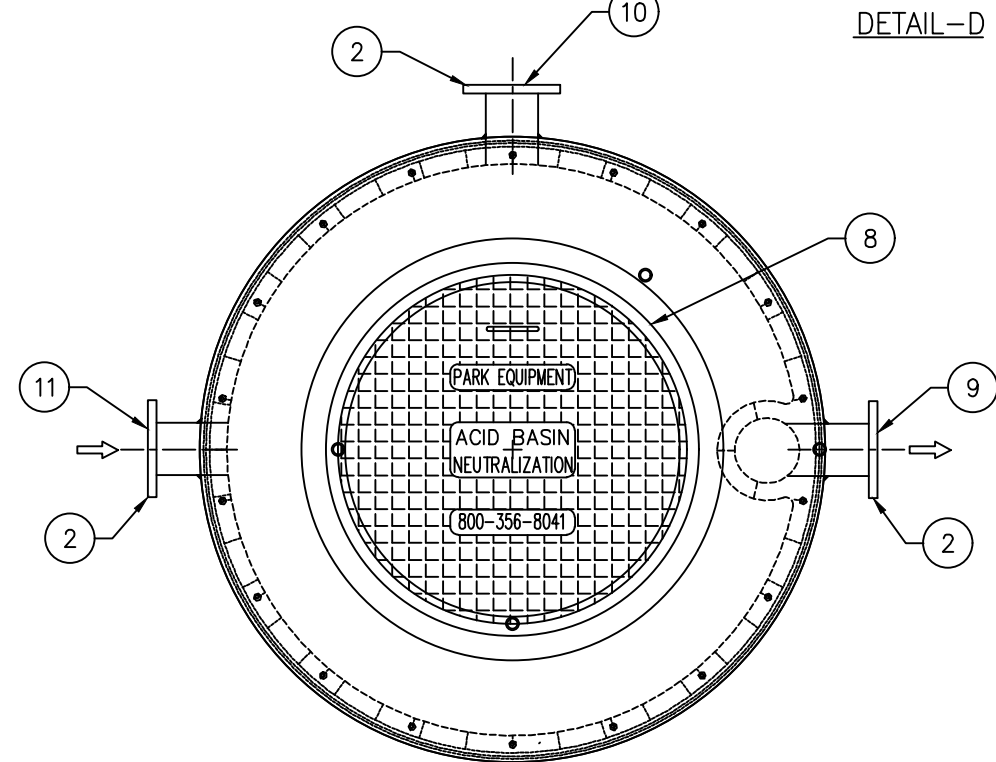


DETAIL-D

COATED WITH CHEMICAL RESISTANT EPOXY 50 MILS DFT ALL EXTERIOR SURFACES



ACID NEUTRALIZATION BASIN SIDE VIEW



ACID NEUTRALIZATION SUMP TOP VIEW

KEYED NOTES		
MARK	QTY	DESCRIPTION
1	1	1/4" THK A36 CARBON STEEL SHELL
2	1	ANSI CLASS D-150 SERIES 300 STAINLESS STEEL FLANGED NOZZLE
3	1	ACID PROOF CERAMIC TILE (2")
4	1	ACID RESISTANT FURAN MORTAR, NOMINAL, 1/8" SPACING
5	1	CORROSION RESISTANT MEMBRANE LINER ATLASTIC 55
6	1	ALL EXTERIOR SURFACES COATED WITH CHEMICAL RESISTANT EPOXY 50 MILS DFT
7	1	1/8" NEOPRENE GASKET ADHERED TO MANWAY COVER
8	1	HEAVY DUTY CAST IRON FRAME & COVER w/ SS BOLTS & GASKET (EPOXY COATED INT/EXT)
9	1	OUTLET NOZZLE RE: DETAIL D
10	1	4" VENT
11	1	INLET NOZZLE RE: DETAIL D
12	1	6" DIA CLR INSPECTION COVER w/ HANDLE, SS BOLTS, WINGNUTS, & GASKET
13	1	CONCRETE PAD (BY CONTRACTOR)
14	1	CONCRETE PLACED AROUND TANK (BY CONTRACTOR)
15	1	MANWAY HANDLE RE: DETAIL C
16	1	MANWAY ACCESS RE: DETAIL B
17	1	MANWAY EXTENSION (VERIFY HT)
18	1	CHEMICAL ROCK FILL LEVEL
19	1	LIFTING LUGS
20	1	CERAMIC DIP TUBE INTEGRAL TO SIDEWALL BRICK LINING
21	1	INTERNAL CERAMIC LINER RE: DETAIL A
22	1	ANTC-XXX NEUTRALIZATION SUMP XXX GALLON CAP
23	1	5x6.7 STEEL CHANNEL w/ SEAL WELDED ENDCAPS
24	1	CONCRETE FOUNDATION PAD BY OTHERS
25	1	ATLASTIC 50 ASPHALTIC MEMBRANE 1/4" THK (INTERIOR)
26	1	STEEL MANWAY FRAME
27	1	REMOVABLE STEEL ACCESS
28	1	1/2" Ø STEEL HANDLE (TYPICAL)

THIS DOCUMENT AND THE INFORMATION CONTAINED HEREIN IS THE PROPERTY OF PARK COMPANIES. ANY REPRODUCTION OR UNAUTHORIZED USE IS STRICTLY PROHIBITED WITHOUT WRITTEN CONSENT. THIS DOCUMENT SHALL BE RETURNED UPON REQUEST.

TANK MODEL	DIMENSIONS			INLET OUTLET	CHEMICAL ROCK LBS.	NOMINAL GALLONS	MAX EFFLUENT GAL/HR	NUMBER OF LAB STATIONS
	D	H	FL					
ANTC-0015	30"Ø	23"	5"	4"	200	15	45	2-5
ANTC-0030	30"Ø	27"	10"	4"	400	30	90	6-10
ANTC-0055	36"Ø	32"	24"	4"	750	55	165	16
ANTC-0100	36"Ø	45"	36"	4"	1,500	100	300	30
ANTC-0150	36"Ø	62"	48"	4"	2,000	150	450	45
ANTC-0200	42"Ø	76"	38"	4"	2,700	200	600	60
ANTC-0275	48"Ø	76"	35"	4"	3,700	275	825	85
ANTC-0350	60"Ø	60"	29"	4"	4,700	350	1,050	105
ANTC-0500	66"Ø	72"	34"	4"	6,700	500	1,500	150
ANTC-0700	72"Ø	77"	40"	4"	9,400	700	2,000	200
ANTC-0750	72"Ø	80"	43"	4"	10,000	750	2,250	225
ANTC-1000	72"Ø	98"	57"	4"	13,400	1,000	3,000	300
ANTC-1500	84"Ø	102"	63"	4"	20,000	1,500	4,500	450
ANTC-2000	96"Ø	102"	64"	4"	26,700	2,000	6,000	600



ACID NEUTRALIZING TANK  
MONDEL ANTC - 15 TO 2,000 GALLONS

PM	PC	DRN	ENG	DWG. NO.	REV.
				ANTC-1A	A
DATE				2023	

CREATED ON 4/19/2024 BY ... LAST MODIFIED ON 4/19/2024 2:49 PM BY kw

PLOTTED ON 4/19/2024 2:49 PM BY vl. Kate, c:\users\vu\Desktop\file replacement website\ANTC-1A

© ParkUSA. ALL RIGHTS RESERVED.