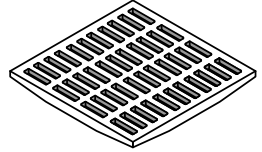
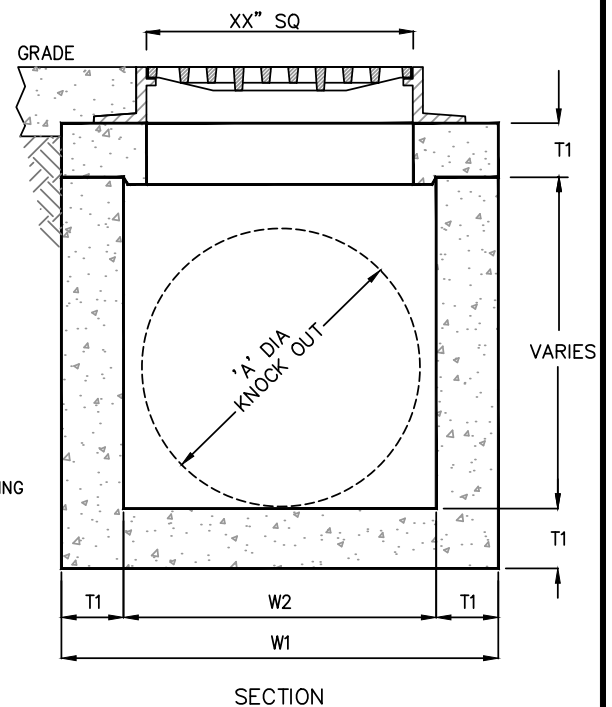


GRATE SCHEDULE	
	
GRATE/FRAME = 1215 lbs	MODEL No. V-5648
OPEN AREA = 1210 in <sup>2</sup>	
Flowrate Q cfs	Water Depth Over Grate
13.04	1"
18.44	2"
22.59	3"
26.08	4"
29.16	5"
31.95	6"
The orifice equation is for flow through a grate under ponding conditions is used.	



KEYED NOTES		
MARK	QTY	DESCRIPTION
1	1	CAST IRON FRAME & GRATE
2	1	TOP SECTION
3	1	BASIN SECTION
4	1	BLOCKOUT AS REQ'D (MAX. SIZE 'W2' DIA)
5	1	NAMEPLATE: PRECAST CATCHBASIN MODEL GIHF-XX PARK USA 888-611-PARK WWW.PARKUSA.COM

DIMENSIONS							
MODEL #	L1	L2	W1	W2	T1	GRATE SIZE	WEIGHT LBS
GIHF-86	94"	86"	54"	46"	4"	48"X48"	9,000
GIHF-96	108"	96"	72"	60"	6"	48"X48"	11,000
GIHF-120	132"	120"	72"	60"	6"	48"X48"	15,000
GIHF-144	156"	144"	84"	72"	6"	48"X48"	20,000

## SPECIFICATIONS


CONCRETE : CLASS I/II CONCRETE WITH OF DESIGN STRENGTH OF 4500 PSI AT 28 DAYS. UNIT IS OF MONOLITHIC CONSTRUCTION AT FLOOR AND FIRST STAGE OF WALL WITH SECTIONAL RISER TO REQUIRED DEPTH. RATED FOR H-20 LOADING.

REINFORCEMENT: GRADE 60 REINFORCED WITH STEEL REBAR TO CONFORM TO ASTM A615 ON REQUIRED CENTERS OR EQUAL.

C.I. CASTINGS: CAST IRON FRAMES AND GRATES ARE MANUFACTURED OF GREY CAST IRON CONFORMING TO ASTM A48-76 CLASS 30.



© ParkUSA. ALL RIGHTS RESERVED.

PROJECT: .	
CUSTOMER: .	
ENGINEER: .	
ORDER #: .	PROJ #: .
DATE: .	LOCATION: .
	
www.parkusa.com 888-611-PARK	
HIGH FLOW CAPACITY GRATE INLET MODEL GIHF - 86" THRU 144"	
PM	PC
DRN	ENG
DWG. NO. GIHF-1	
DATE 01/2019	
REV.	