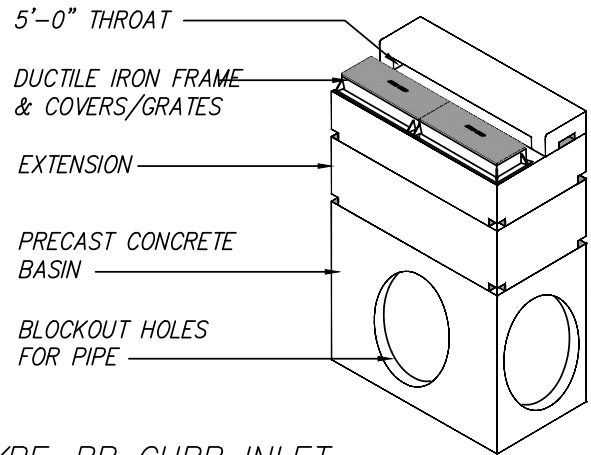
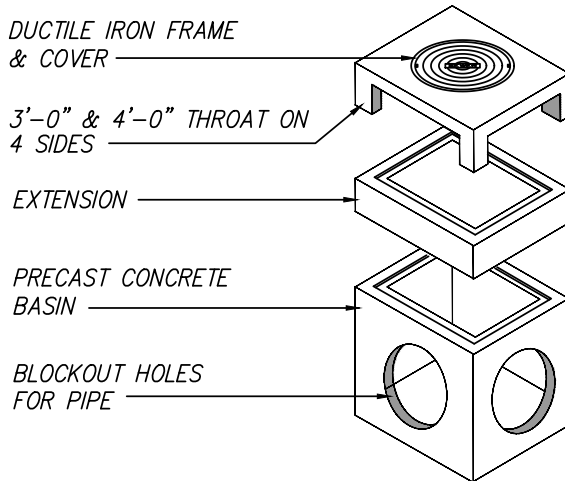


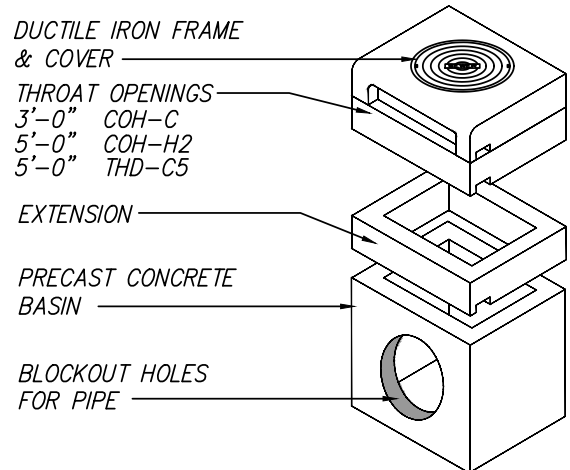
TYPE-B CURB INLET



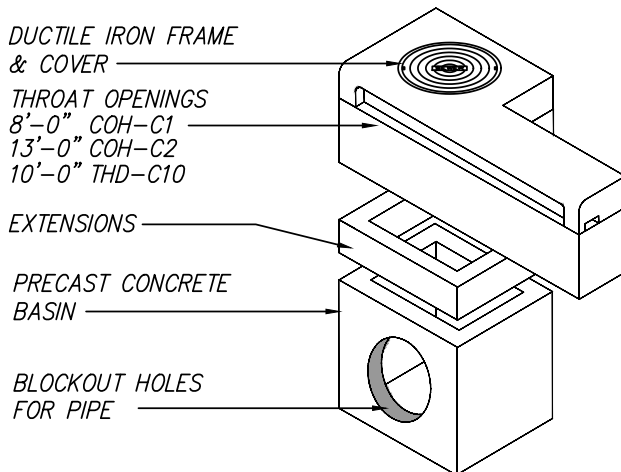
TYPE-BB CURB INLET



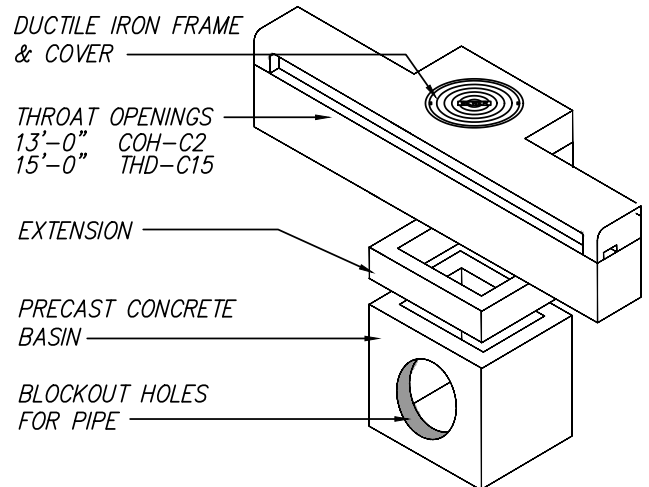
TYPE-E CURB INLET



TYPE-C, C5 & H2 CURB INLET



TYPE-C, C-1, C-10 CURB INLET



TYPE-C2, C15 CURB INLET

© ParkUSA. ALL RIGHTS RESERVED.

SPECIFICATIONS

CONCRETE : CLASS I/II CONCRETE WITH OF DESIGN STRENGTH OF 4500 PSI AT 28 DAYS. UNIT IS OF MONOLITHIC CONSTRUCTION AT FLOOR AND FIRST STAGE OF WALL WITH SECTIONAL RISER TO REQUIRED DEPTH. RATED FOR H-20 LOADING.

REINFORCEMENT: GRADE 60 REINFORCED. NO. 4 STEEL REBAR TO CONFORM TO ASTM A615 ON REQUIRED CENTERS OR EQUAL.

C.I. CASTINGS: CAST IRON FRAMES AND GRATES ARE MANUFACTURED OF GREY CAST IRON CONFORMING TO ASTM A48-76 CLASS 30.



www.parkusa.com

888-611-PARK

PRECAST CONCRETE CURB INLETS

PM	PC	DRN	ENG	DWG. NO.	REV.
DATE	01/2019			CBIN-1	