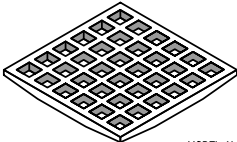
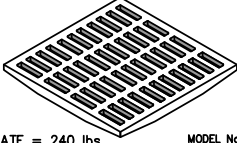
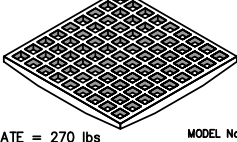
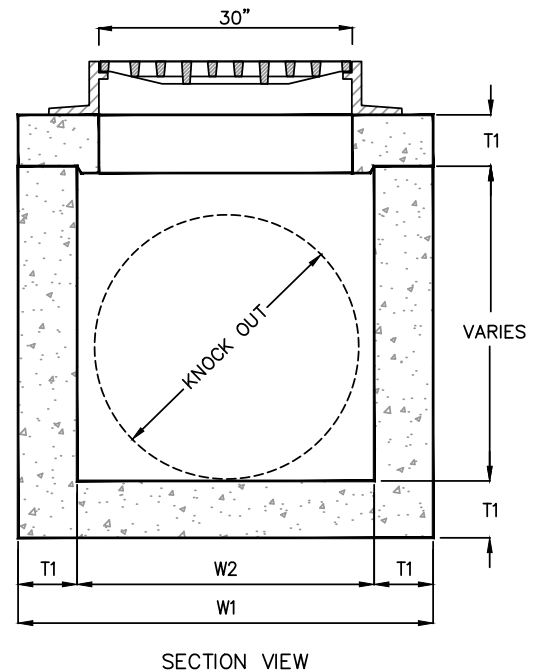
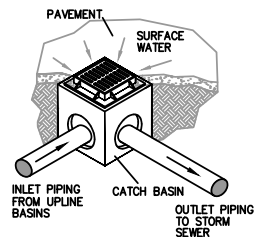


GRATE SCHEDULE	
	MODEL No. V4880-1
GRATE = 200 lbs OPEN AREA = 489 in ²	
	MODEL No. V4880-3
GRATE = 240 lbs OPEN AREA = 434 in ²	
	MODEL No. V4880-4
GRATE = 270 lbs OPEN AREA = 387 in ²	



KEYED NOTES		
MARK	QTY	DESCRIPTION
1	1	CAST IRON FRAME & GRATE
2	1	TOP SECTION
3	1	PRECAST CONCRETE BASIN SECTION
4	1	THIN WALL KNOCKOUT ON ALL 4 SIDES, SEE KO DIMENSION FOR MAXIMUM PIPE O.D.
5	1	PRECAST CATCH BASIN MFG: ParkUSA 888-611-PARK WWW.PARKUSA.COM MODEL: CB5600-1



NOTE:
RISER SECTION AVAILABLE IN 6" TO 12" DEPTHS.

MODEL	W1	W2	H1	H2	T1	T2	KO	GRATE SIZE	OPEN AREA	WEIGHT LBS
CB-12	15"	10"	21"	18"	3"	21"	10"	12"x12"x1"	90	180
CB-14	20"	12"	28"	24"	4"	4"	12"	14"x14"x1½"	120	600
CB-18	24"	16"	34"	30"	4"	4"	15"	18"x18"x1½"	168	1,000
CB-20	26"	18"	34"	30"	4"	4"	17"	20"x20"x1½"	170	1,335
CB-24	32"	22"	41"	36"	5"	5"	22"	24"x24"x2"	268	2,245
CB-27	37"	25"	42"	36"	6"	6"	24"	27"x27"x2"	350	2,875


SPECIFICATIONS

CONCRETE : CLASS I/II CONCRETE WITH OF DESIGN STRENGTH OF 4500 PSI AT 28 DAYS. UNIT IS OF MONOLITHIC CONSTRUCTION AT FLOOR AND FIRST STAGE OF WALL WITH SECTIONAL RISER TO REQUIRED DEPTH. RATED FOR H-20 LOADING.

REINFORCEMENT: GRADE 60 REINFORCED WITH STEEL REBAR TO CONFORM TO ASTM A615 ON REQUIRED CENTERS OR EQUAL.

C.I. CASTINGS: CAST IRON FRAMES AND GRATES ARE MANUFACTURED OF GREY CAST IRON CONFORMING TO ASTM A48-76 CLASS 30.



PROJECT: .	
CUSTOMER: .	
ENGINEER: .	
ORDER #:	PROJ #:
DATE:	LOCATION: .
	
www.parkusa.com 888-611-PARK	
TYPE-A GRATE INLET MODEL CB5600 12" THRU 27"	
PM	PC
DRN	ENG
DWG. NO.	REV.
DATE 01/2019	CB5600-1