

Specifications

CONCRETE :

Class II concrete with design strength of 4500 PSI at 28 days. Unit is of monolithic construction at floor and first stage of wall with sectional riser to required depth.

REINFORCEMENT:

Reinforced with Grade 60 steel rebar conforming to to ASTM A615 on required centers or equal.

C.I. CASTINGS:

Manhole frames, covers or grates are manufactured of grey cast iron conforming to ASTM A48-76 Class 30. Manhole shall have 24 inch nominal diameter and be traffic duty.

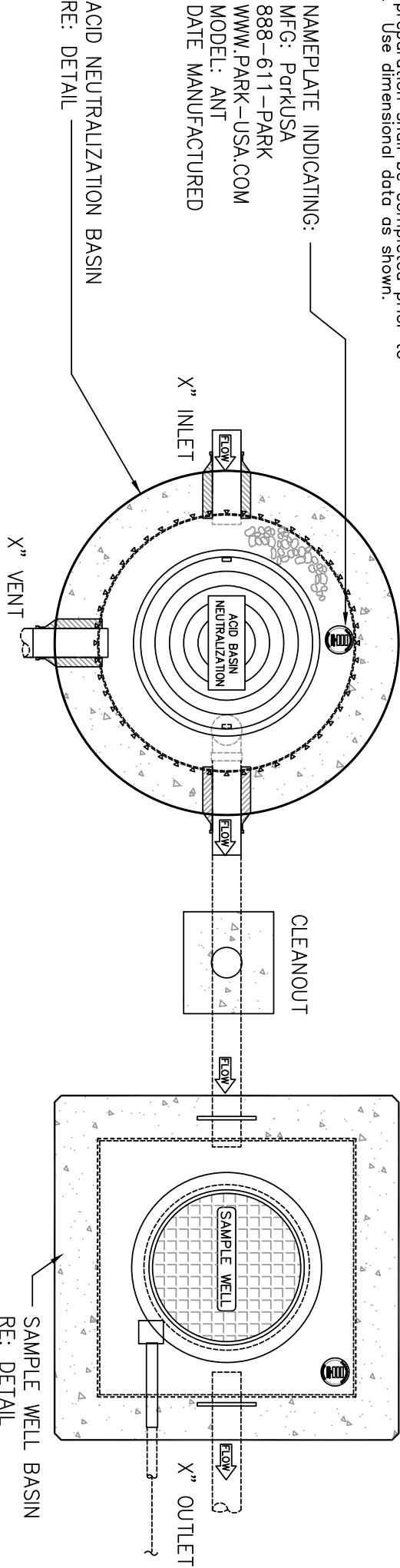
Engineering Data

Interceptor is structurally and hydraulically engineered conforming to Uniform Plumbing Code. Liquid capacity as indicated.

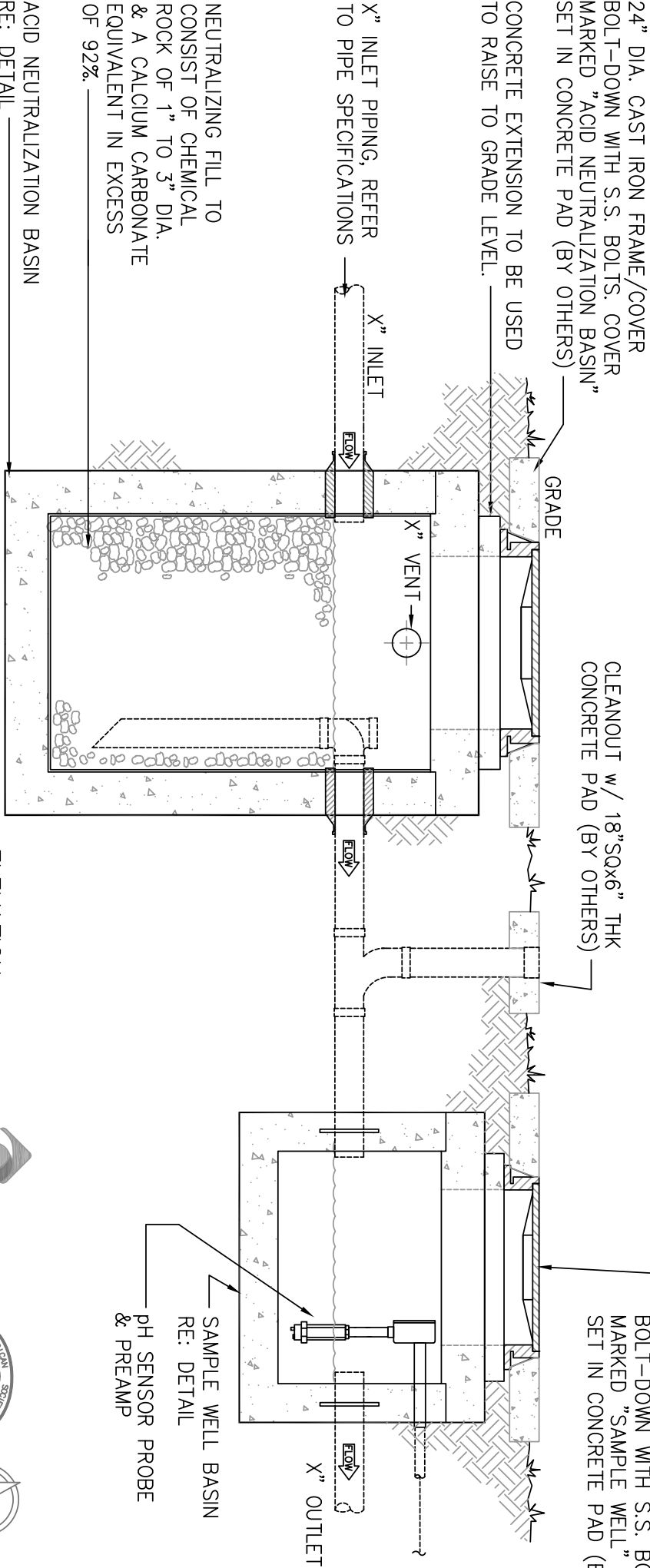
Field excavation and preparation shall be completed prior to delivery of interceptor. Use dimensional data as shown.

NAMEPLATE INDICATING:

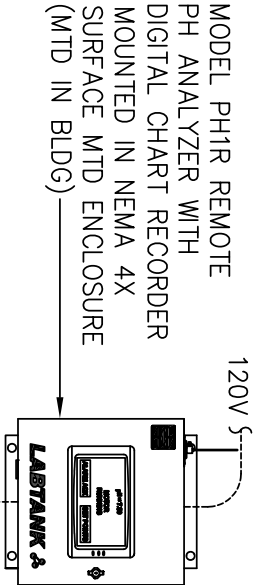
MFG: ParkUSA
888-611-PARK
WWW.PARK-USA.COM
MODEL: ANT
DATE MANUFACTURED



TOP VIEW



ELEVATION



MODEL PH1R REMOTE
PH ANALYZER WITH
DIGITAL CHART RECORDER
MOUNTED IN NEMA 4X
SURFACE MTD ENCLOSURE
(MTD IN BLDG)

1\"/>

Δ	-	-			
Δ	-	-			
Δ	-	-			
Δ	-	-			
Δ	-	-			

© Park 2012

PROJECT : _____

LOCATION : _____

ENGINEER : _____

DATE: _____



ACID NEUTRALIZATION SYSTEM
MODEL ANT w/ MONITOR SYSTEM

SCALE	NONE	DWG. NO.	ANT-SYS1	REV.	A
DATE	2012				

