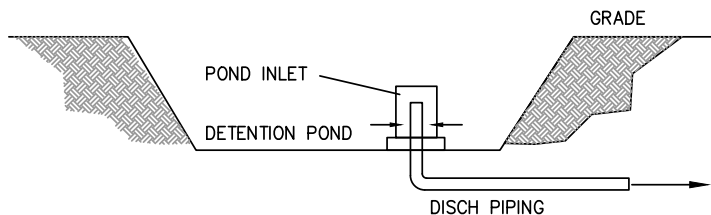


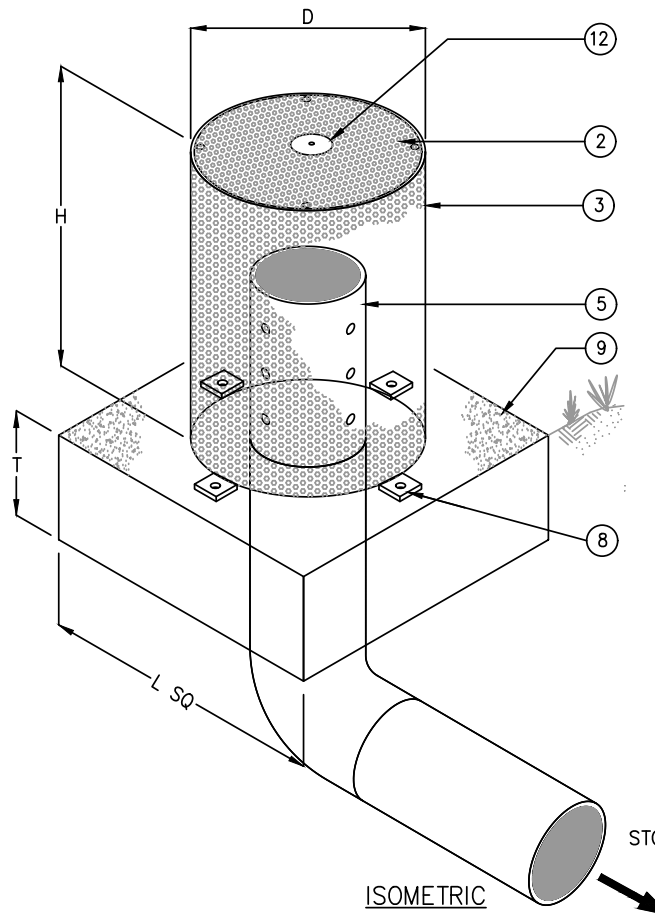
ELEVATION

SCHEDULE						
MODEL	PIPE SIZE [IN]	SCREEN AREA [SQ FT]	SCREEN DIAMETER, D [IN]	SCREEN HEIGHT, H [IN]	PAD LENGTH, L [IN]	PAD THICKNESS, T [IN]
SWPI-TG-06	6	2.11	8	10.11	20	6
SWPI-TG-08	8	3.76	10	14.72	22	6
*SWPI-TG-10	10	5.87	16	12.81	28	6
*SWPI-TG-12	12	8.45	20	14.37	32	6
*SWPI-TG-15	15	13.21	26	16.78	38	8
*SWPI-TG-18	18	19.02	32	19.24	44	8
*SWPI-TG-24	24	33.81	42	26.39	54	8

*CONCRETE PAD DESIGN MAY VARY BY APPLICATION
NOTE: FLOATABLE COLLECTION SCREEN, MODELS FCS-1 OR HCFCS, RECOMMENDED FOR PIPES LARGER THAN 24"



TYPICAL APPLICATION



KEYED NOTES		
MARK	QTY	DESCRIPTION
1	1	WATER QUALITY POND SURFACE TOP. TRASH CAGE OVER DRAW DOWN PIPE
2	1	REMOVABLE COVER SCREEN SECURED W/ BOLTS
3	1	3/4" #9 EXPANDED METAL SCREEN, HDG
4	1	DRAW DOWN PIPE w/ 3 ROWS OF SLOTTED OPENINGS 6 SLOTS EA ROW
5	1	DRAIN PIPING
6	1	90 DEGREE ELBOW (BY OTHERS)
7	1	METAL BRACKET BOLTED TO TRASH BASKET & THROTTLE PLATE
8	1	SECURE TO PAD W/ GALV 3/8" ANCHOR BOLTS
9	1	PRECAST CONCRETE PAD
10	1	THROTTLE PLATE W/ ORIFICE
11	1	STEEL CAP
12	1	NAMEPLATE MFG: ParkUSA 888-611-PARK WWW.PARKUSA.COM MODEL: SWPI-EM DATE MANUFACTURED

SPECIFICATIONS

CONCRETE :

CLASS 1 CONCRETE WITH OF DESIGN STRENGTH OF 4500 PSI AT 28 DAYS. UNIT IS OF MONOLITHIC CONSTRUCTION AT FLOOR AND FIRST STAGE OF WALL WITH SECTIONAL RISER TO REQUIRED DEPTH. RATED FOR H-20 LOADING.

REINFORCEMENT:

GRADE 60 REINFORCED. NO. 4 STEEL REBAR TO CONFORM TO ASTM A615 ON REQUIRED CENTERS OR EQUAL. BAR BENDING AND PLACEMENT SHALL CONFORM TO THE LATEST ACI STANDARDS. UNIT SHALL CONFORM TO ASTM C915 - "PRECAST REINFORCED CONCRETE STRUCTURES".

SCREEN:

ALL STEEL SHALL BE A36 STEEL WELDED IN ACCORDANCE TO AWS D1.1. ALL STEEL SHALL BE HOT-DIPPED GALVANIZED AFTER FABRICATION.

ENGINEERING DATA

FIELD EXCAVATION AND PREPARATION SHALL BE COMPLETED PRIOR TO DELIVERY OF STRUCTURE. USE DIMENSIONAL DATA AS SHOWN.

© ParkUSA. ALL RIGHTS RESERVED.

PROJECT:	
CUSTOMER:	
ENGINEER:	
ORDER #:	PROJ #:
DATE:	LOCATION:



www.parkusa.com 888-611-PARK

STORMWATER POND INLET MODEL SWPI-EM

PM	PC	DRN	ENG	DWG. NO.	REV.
				SWPI-EM	
DATE	01/2019				

