

TREE BASIN SCHEDULE				
MODEL NO.	EMPTY WT (LBS)	LENGTH L	WIDTH W	HEIGHT H
ABV-XX	19,000	7'-0"	7'-0"	7'-0"

OTHER SIZES ARE AVAILABLE. CONTACT US FOR MORE INFORMATION

TB-XX
MAXIMUM FLOW RATE
25 - 25 GPM
50 - 50 GPM
ETC...



NAMEPLATE

APPLICATIONS

- ▣ INDUSTRIAL
- ▣ RESIDENTIAL
- ▣ INSTITUTIONAL
- ▣ REDEVELOPMENT



GENERAL INFORMATION

THE PARK TREE BASIN INTERCEPTOR IS DESIGNED FOR STORMWATER RUNOFF FROM COMMERCIAL & INDUSTRIAL APPLICATIONS WHERE EXCESSIVE POLLUTANTS MAY HARM THE ENVIRONMENT OR DAMAGE SEWER SYSTEMS.

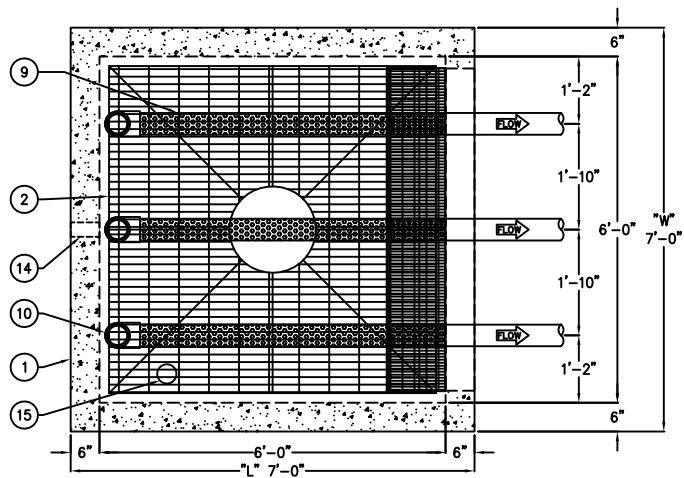
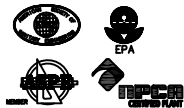
GUARANTEED PERFORMANCE

TREE BASIN IS SIMILAR TO A SAND FILTER IN WHICH GRANULAR ENGINEERED MEDIA, INSTEAD OF SAND, IS USED AS THE FILTERING MEDIA. OUR GRANULAR ENGINEERED MEDIA EXHIBITS HIGH DISSOLVED PHOSPHORUS ADSORPTION CAPACITY, AND IS GENERALLY USED IN STORM WATER TREATMENT APPLICATIONS REQUIRING PHOSPHORUS REMOVAL.

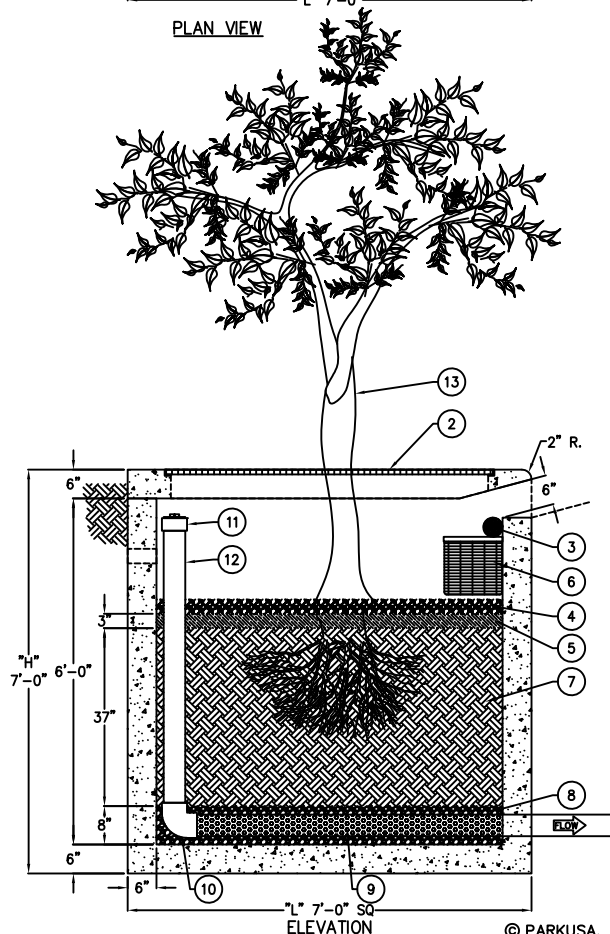
A CERTIFIED PERFORMANCE ANALYSIS UTILIZING A PROPRIETARY COMPUTER PROGRAM WILL ACCURATELY MODEL SYSTEMS TO ENSURE THAT THEIR EFFLUENT QUALITIES MEET THE REQUIRED DISCHARGE CRITERIA (EPA AND LOCAL CODES)

CONTACT OUR ENGINEERING DEPT. @ 888-611-PARK FOR A FREE PERFORMANCE EVALUATION.

KEYED NOTES		
MARK	QTY	DESCRIPTION
1	1	7'-0" x 7'-0" x 7'-0" PRECAST CONCRETE VAULT
2	1	68"x68" FRAME & GRATE (CAST-IN, SECTIONAL)
3	1	OIL ABSORBING MEDIA
4	1	DIFFUSION ROCK LAYER
5	1	MULCH LAYER
6	1	12"x12"x67" STEEL BASKET
7	1	SOIL LAYER
8	1	GRAVEL LAYER
9	3	4" PERFORATED PVC PIPE w/ 3/4" HOLES
10	3	4" PVC ELL
11	3	4" PVC CLEANOUT
12	3	4" PVC RISER PIPE
13	1	VEGETATION (VARIOUS OPTIONS AVAILABLE)
14	1	3" COUPLING
15	1	NAMEPLATE INDICATING: MFG: ParkUSA 888-611-PARK MODEL: TB-XX DATE MANUFACTURED
16	1	BY-PASS CHAMBER



PLAN VIEW



ELEVATION


© PARKUSA. ALL RIGHTS RESERVED.

SPECIFICATIONS

- CONCRETE:** CLASS I/II CONCRETE WITH DESIGN STRENGTH OF 4500 PSI AT 28 DAYS. UNIT IS OF MONOLITHIC CONSTRUCTION AT FLOOR AND FIRST STAGE OF WALL WITH SECTIONAL RISER TO REQUIRED DEPTH.
- REINFORCEMENT:** GRADE 60 REINFORCED WITH STEEL REBAR CONFORMING TO ASTM A615 ON REQUIRED CENTERS OR EQUAL.
- MATERIALS:** ACCESS FRAME & COVER SHALL BE FABRICATED WITH MIN. 1/4" THICK NONSKID FLOOR PLATE, BOLTDOWN, & LIFTING HANDLES. ALL MATERIALS TO BE CORROSION RESISTANT.

ENGINEERING DATA

INTERCEPTOR IS STRUCTURALLY AND HYDRAULICALLY ENGINEERED. NOMINAL TOTAL LIQUID CAPACITY AND OIL HOLDING CAPACITY AS INDICATED. RECOMMENDED FOR FLOW RATES OF 5 TO 180 GPM (CONSULT PARK FOR PROPER SIZING). MANUFACTURER SHALL SUBMIT PERFORMANCE CALCULATIONS FOR OIL & WATER SEPARATION CERTIFIED BY A LICENSED PROFESSIONAL ENGINEER UPON REQUEST. FIELD EXCAVATION AND PREPARATION SHALL BE COMPLETED PRIOR TO DELIVERY OF INTERCEPTOR.

PROJECT:			
CUSTOMER:			
ENGINEER:			
ORDER #:			
PROJ #:			
DATE:			
 888.611.PARK® PARKUSA www.ParkUSA.com			
TREE BASIN			
PM	DRN	ENG	DWG. NO.
DATE	01/2018	TB-1	REV.
			A