



MAX PIPE SIZE (IN)	CONTROL BASIN WIDTH A
30"	4'-0"
36"	5'-0"
48"	6'-0"
60"	7'-0"

GENERAL INFORMATION

PARK STORMTROOPER INTERCEPTOR
THE STORMTROOPER STORMWATER INTERCEPTOR IS DESIGNED TO RECEIVE & TREAT STORMWATER RUNOFF ON A GRAVITY-FLOW AND ONCE-THROUGH BASIS.

GUARANTEED PERFORMANCE
PRE-ENGINEERED COALESCING MEDIA PACKS ARE UTILIZED FOR ENHANCED SEPARATION WHICH PROVIDE SUPERIOR PERFORMANCE COMPARED TO OTHER SEPARATORS WHICH UTILIZE BAFFLES OR DIVERTERS.

APPLICATIONS

THE PARKUSA STORMTROOPER INTERCEPTOR IS DESIGNED FOR STORMWATER RUNOFF FROM COMMERCIAL & INDUSTRIAL APPLICATIONS WHERE EXCESSIVE POLLUTANTS MAY HARM THE ENVIRONMENT OR DAMAGE SEWER SYSTEMS.

BY-PASS DESIGN

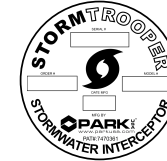
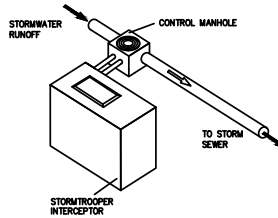
THE UNIQUE DESIGN OF THE CONTROL BASIN ALLOWS FOR RESULTS AN OWNER CAN CLEARLY SEE. DURING A STORM EVENT, UNTREATED STORMWATER ENTERS THE INLET COMPARTMENT AND IS DIVERTED TO THE INTERCEPTOR FOR TREATMENT. CLEAN STORMWATER CAN BE WITNESSED IN THE EFFLUENT COMPARTMENT AFTER TREATMENT.

MAINTENANCE

THE STORMTROOPER HAS BECOME KNOWN IN THE INDUSTRY AS THE "EASIEST TO MAINTAIN." HATCHWAY DESIGN MAKES INSPECTION AND VAULT ENTRY ACCESSIBLE FOR MAINTENANCE. ALL COMPARTMENTS ALLOW FOR THE LARGER HOSE ASSOCIATED WITH VACTOR TRUCK PUMP OUT. MAINTENANCE INSTRUCTIONS AND LOGS ARE AVAILABLE FROM PARK ENGINEERING.

CALL US

CONTACT PARK ENGINEERING FOR HELP SIZING, SWQMPs AND PERFORMANCE INFORMATION.



NAMEPLATE

APPLICATIONS

- ☐ INDUSTRIAL
- ☐ COMMERCIAL
- ☐ RESIDENTIAL
- ☐ INSTITUTIONAL
- ☐ REDEVELOPMENT
- ☐ NPDES - MUNICIPAL/INDUSTRIAL
- ☐ BMP STRUCTURAL SOLUTION

STORMTROOPER, U.S. PATENT 7,470,381
STORMWATER INTERCEPTOR SCHEDULE

MODEL NO.	TOTAL CAPACITY	TREATMENT PERFORMANCE				DIMENSIONS			
		FLOWRATE	SOLIDS	OIL	LENGTH	WIDTH	FLOWLINE	HEIGHT	
STD DUTY	USGd	GPM CFS	FT ³ USGd	L	W	FL	H		
SWST-05	500	300 0.67	25	165	7'-10"	4'-4"	3'-3"	5'-3"	
SWST-06	600	400 0.89	36	198	7'-10"	4'-4"	3'-10"	5'-10"	
SWST-08	800	500 1.11	50	264	7'-10"	4'-4"	4'-0"	6'-0"	
SWST-10	1,000	650 1.45	60	460	9'-0"	6'-0"	4'-6"	6'-0"	
SWST-15	1,500	875 1.95	115	570	9'-0"	6'-0"	5'-6"	7'-0"	
SWST-20	2,000	1,125 2.51	130	1,080	9'-0"	6'-0"	6'-6"	8'-0"	
SWST-25	2,500	1,375 3.06	145	1,080	13'-0"	7'-0"	5'-6"	7'-0"	
SWST-30	3,000	1,600 3.56	215	1,080	13'-0"	7'-0"	6'-6"	8'-0"	
SWST-35	3,500	1,775 3.95	290	1,080	13'-0"	7'-0"	6'-10"	8'-4"	
SWST-40	4,000	1,950 4.34	225	1,680	16'-0"	8'-6"	5'-6"	7'-10"	
SWST-45	4,500	2,150 4.79	330	1,680	16'-0"	8'-6"	6'-0"	8'-0"	
SWST-50	5,000	2,350 5.23	340	1,680	16'-0"	8'-6"	6'-6"	8'-0"	
SWST-60	6,000	2,675 5.96	450	1,680	16'-0"	8'-6"	7'-6"	9'-0"	
*SWST-70	7,000	3,000 6.68	500	2,375	18'-0"	9'-0"	7'-8"	9'-2"	
*SWST-80	8,000	3,325 7.41	635	2,375	18'-0"	9'-0"	8'-6"	10'-0"	
*SWST-90	9,000	3,625 8.07	770	2,375	18'-0"	9'-0"	9'-4"	10'-10"	
*SWST-100	10,000	3,900 8.69	830	2,375	24'-2"	11'-2"	7'-2"	9'-6"	
*SWST-110	11,000	4,175 9.30	910	3,490	21'-2"	11'-2"	8'-0"	9'-6"	
*SWST-120	12,000	4,425 9.86	970	3,490	21'-2"	11'-2"	8'-6"	10'-0"	
*SWST-130	13,000	4,725 10.52	1,070	3,740	21'-2"	11'-2"	9'-0"	10'-6"	
*SWST-140	14,000	4,950 11.02	1,200	3,740	21'-2"	11'-2"	9'-8"	11'-2"	
*SWST-150	15,000	5,200 11.58	1,335	3,740	21'-2"	11'-2"	10'-8"	12'-2"	

OTHER SIZES ARE AVAILABLE. CONTACT US FOR MORE INFORMATION
*INCLUDES ADDITIONAL STRUCTURAL SUPPORT WALL



SPECIFICATIONS

CONCRETE :

CLASS 1/II CONCRETE WITH DESIGN STRENGTH OF 4500 PSI AT 28 DAYS. UNIT IS OF MONOLITHIC CONSTRUCTION AT FLOOR AND FIRST STAGE OF WALL WITH SECTIONAL RISER TO REQUIRED DEPTH.

REINFORCEMENT:

GRADE 60 REINFORCED WITH STEEL REBAR CONFORMING TO ASTM A615 ON REQUIRED CENTERS OR EQUAL.

D.I. CASTINGS:

MANHOLE FRAMES, COVERS OR GRATES ARE MANUFACTURED OF DUCTILE IRON CONFORMING TO ASTM A536, AASHTO M306, & AASHTO M105 STANDARDS. MANHOLE SHALL BE NOMINAL 24" DIAMETER AND BE TRAFFIC DUTY.

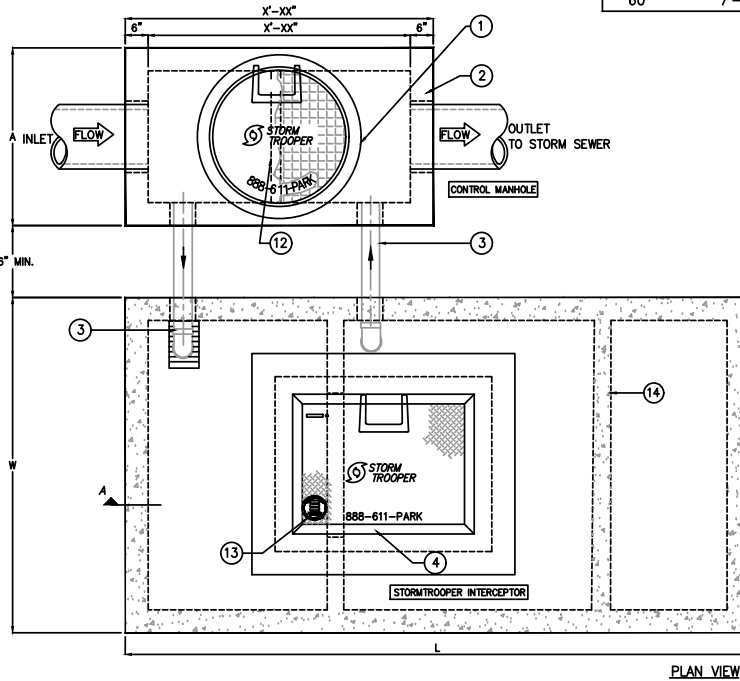
STEEL COVER:

GALVANIZED STEEL SKID-RESISTANT SINGLE LEAF H-20 LOADED.

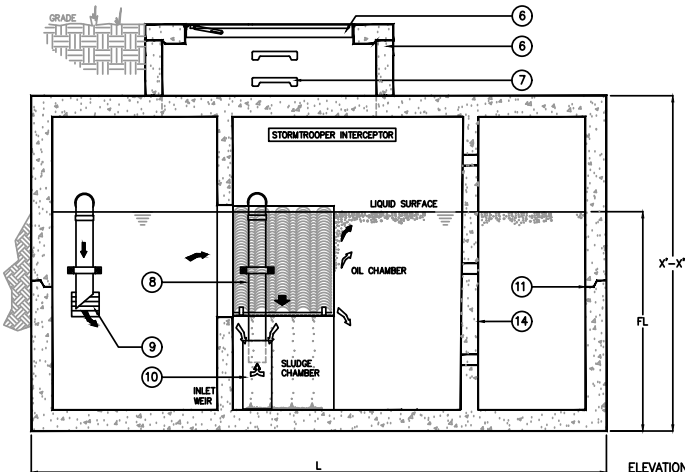
ENGINEERING DATA

INTERCEPTOR IS STRUCTURALLY AND HYDRAULICALLY ENGINEERED CONFORMING TO REGULATORY STANDARDS. NOMINAL TOTAL LIQUID CAPACITY AND OIL HOLDING CAPACITY AS INDICATED.

STORMWATER INTERCEPTORS ARE UTILIZED TO REDUCE NON-POINT SOURCE POLLUTION ASSOCIATED WITH OIL AND SEDIMENT. THE INTERCEPTOR IS DESIGNED TO ALLOW FOR THE DETAINMENT OF SETTLEABLE & FLOATABLE SOLIDS & LIQUIDS. THE INTERCEPTOR SHOULD BE INSPECTED ON A REGULAR BASIS TO DETERMINE PROPER OPERATION AND CLEANING.



PLAN VIEW



ELEVATION

PROJECT: .				
CUSTOMER: .				
ENGINEER: .				
ORDER #:		PROJ #:		
DATE:		LOCATION:		
www.parkusa.com 888-611-PARK				
STORMWATER INTERCEPTOR				
STORMTROOPER MODEL SWST 05 THRU 150				
PM	PC	DRN	ENG	DWG. NO.
DATE 05/2019				REV.
				SWST-1