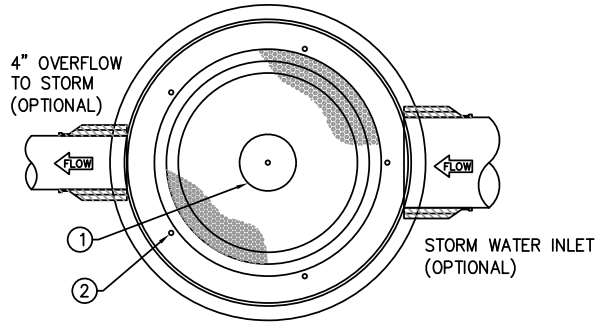
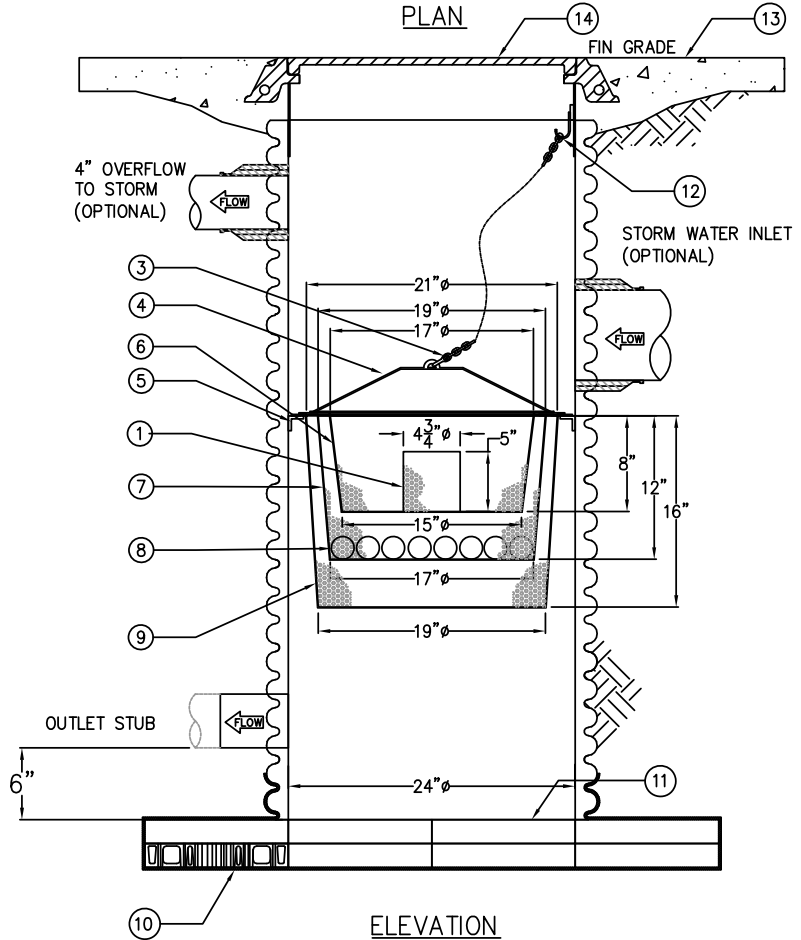


NAMEPLATE



PLAN



ELEVATION

KEYED NOTES		
MARK	QTY	DESCRIPTION
1	1	SS BASKET OVERFLOW
2	1	3/8" Ø HOLES TO ALLOW INFILTRATION
3	1	SS LIFTING CHAIN
4	1	LIFT-OUT HANDLE
5	1	1 1/4"x11/4"x1/4" ROLLED SUPPORT
6	1	8000 MICRON SS FILTRATION BASKET
7	1	3000 MICRON SS FILTRATION BASKET
8	1	HYDROCARBON ABSORPTION PILLOW
9	1	2000 MICRON SS FILTRATION BASKET
10	1	2" DRAINAGE CELL WRAPPED WITH GEOTEXTILE FABRIC
11	1	BOTTOM TO CONTAIN (6) 3/8" HOLES TO ALLOW INFILTRATION
12	1	SS CABLE BRACKET
13	1	CONCRETE APRON (BY OTHERS)
14	1	24" DIA RING & COVER

MODEL #	BASIN MODEL	OD	ID	H	W+2	CL	FILTERED FLOW Q _{FF} (CFS)	BY-PASS FLOW Q _{FB} (CFS)
RFH-24	HDPE-24	19"	21"	12"	21"	9 1/2"	9.12	0.38
RFH-36	HDPE-36	33"	31"	12"	35"	16 1/2"	16.22	0.38
RFH-48	HDPE-48	45"	43"	12"	47"	22 1/2"	22.30	0.38

SPECIFICATIONS

- BASIN:** BASIN IS CONSTRUCTED OF HIGH DENSITY POLYETHYLENE DRAINAGE PIPE CONFORMING TO ASTM F1648. ALL EXTRUDED WELDING SHALL BE PER ASTM F2880.
- BASKET:** BASKET AND TABS TO BE CONSTRUCTED OF 16GA SS 304 PERFORATED PLATE (1/8" HOLES ON 3/8" STAGGER)
- BASKET LIP:** BASKET LIP TO CONSTRUCTED OF 14GA SS 304 PLATE
- LIFT HANDLE:** HANDLE TO CONSTRUCTED OF 1/2" Ø SS 304 ROUND BAR
- OVERFLOW:** LOWER OVERFLOW ORIFICE TO BE CONSTRUCTED OF SS PERFORATED CYLINDER.

© ParkUSA. ALL RIGHTS RESERVED.

PROJECT: _____

CUSTOMER: _____

ENGINEER: _____

ORDER #: _____ PROJ #: _____

DATE: _____ LOCATION: _____

\\AFHQ\FB\R2001\Cust\Cust2017\Engineering\Catalog\MARKETING\Park Logo2018 Park Logo Phone and Web_48x11x-01.png

RAIN WATER HARVEST FILTRATION SYSTEM MODEL – RFH

PM	PC	DRN	ENG	DWG. NO.	REV.
.	.	.	.	RFH-1	A
DATE 01/2018					