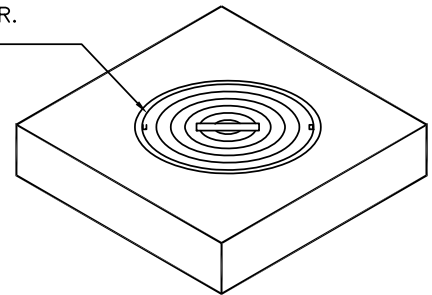
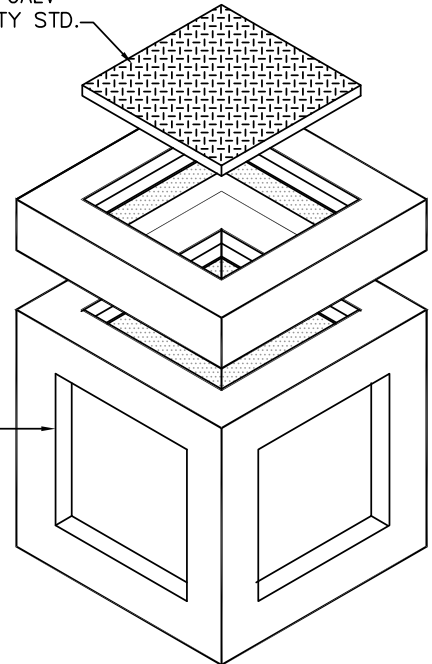


MANHOLE COVER
WATERTIGHT CAST IRON
RING AND COVER.
(OPTIONAL)



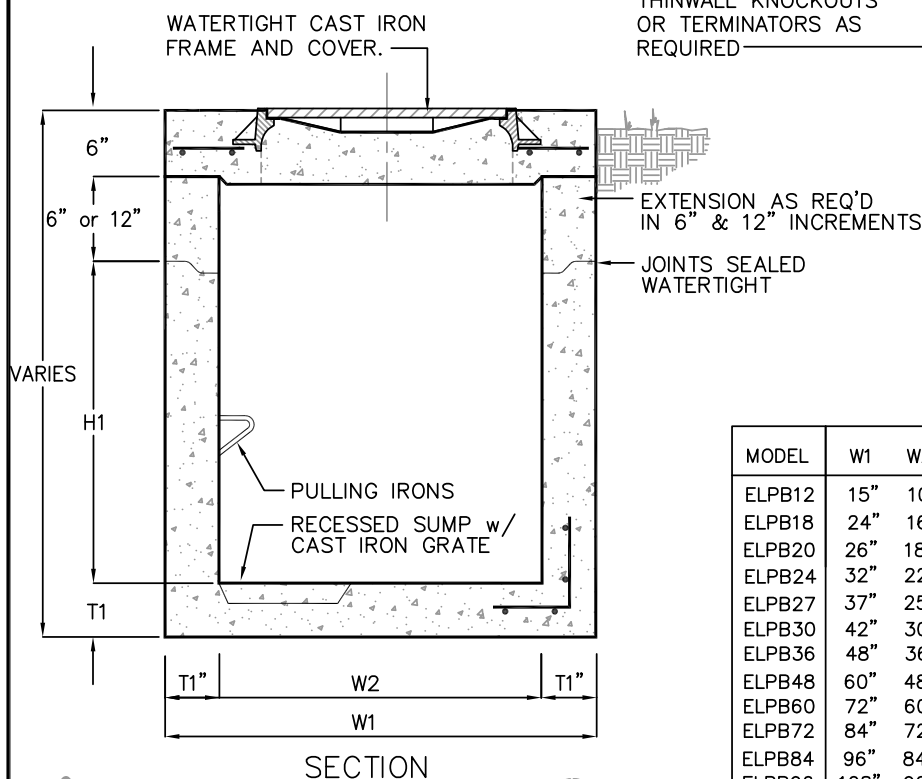
SOLID COVER
SKID-RESISTANT STEEL
COVER & FRAME, GALV
PEDESTRIAN DUTY STD.



NAMEPLATE INDICATING:
MFG: PARK ENVIRONMENTAL
888-611-PARK
WWW.PARK-USA.COM
MODEL ELPB
DATE MANUFACTURED

THINWALL KNOCKOUTS
OR TERMINATORS AS
REQUIRED

ISOMETRIC



MODEL	W1	W2	H1	T1	STD COVER SIZE	WATERTIGHT COVER SIZE	WEIGHT LBS
ELPB12	15"	10"	21"	2"	12"x12"x1"	N/A	180
ELPB18	24"	16"	30"	4"	18"x18"x1½"	N/A	1,000
ELPB20	26"	18"	36"	4"	20"x20"x1½"	N/A	1,335
ELPB24	32"	22"	48"	5"	24"x24"x2"	N/A	2,245
ELPB27	37"	25"	48"	6"	27"x27"x2"	N/A	2,875
ELPB30	42"	30"	48"	6"	32"x32"x2"	24" DIA	4,100
ELPB36	48"	36"	48"	6"	38"x38"x2"	24" DIA	6,600
ELPB48	60"	48"	48"	6"	38"x38"x2"	24" DIA	9,150
ELPB60	72"	60"	60"	6"	38"x38"x2"	30" DIA	13,650
ELPB72	84"	72"	72"	6"	38"x38"x2"	30" DIA	19,000
ELPB84	96"	84"	72"	6"	38"x38"x2"	30" DIA	23,100
ELPB96	108"	96"	72"	6"	38"x38"x2"	30" DIA	27,500

1. CB12 PULLBOX IS RATED FOR PEDESTRIAN LOADING ONLY
2. SUMP & GRATE AVAILABLE FOR PB30 THRU PB60 ONLY

© Park 2016



SPECIFICATIONS

CONCRETE : Class I/II concrete with of design strength of 4500 PSI at 28 days. Unit is of monolithic construction at floor and first stage of wall with sectional riser to required depth. Rated for H-20 Loading.

REINFORCEMENT: Grade 60 reinforced. No. 4 steel rebar to conform to ASTM A615 on required centers or equal.

C.I. CASTINGS: Cast iron frames and grates are manufactured of grey cast iron conforming to ASTM A48-76 Class 35.



PRECAST ELECTRIC PULL BOX MODEL ELPB

PM	DRN	DWG. NO.	REV.
DATE	CH	ELPB-1	A
01/14			