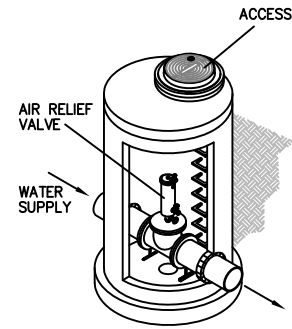
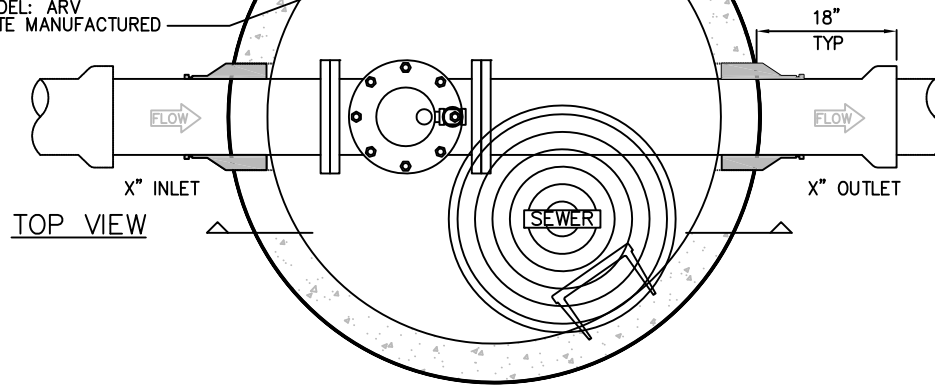
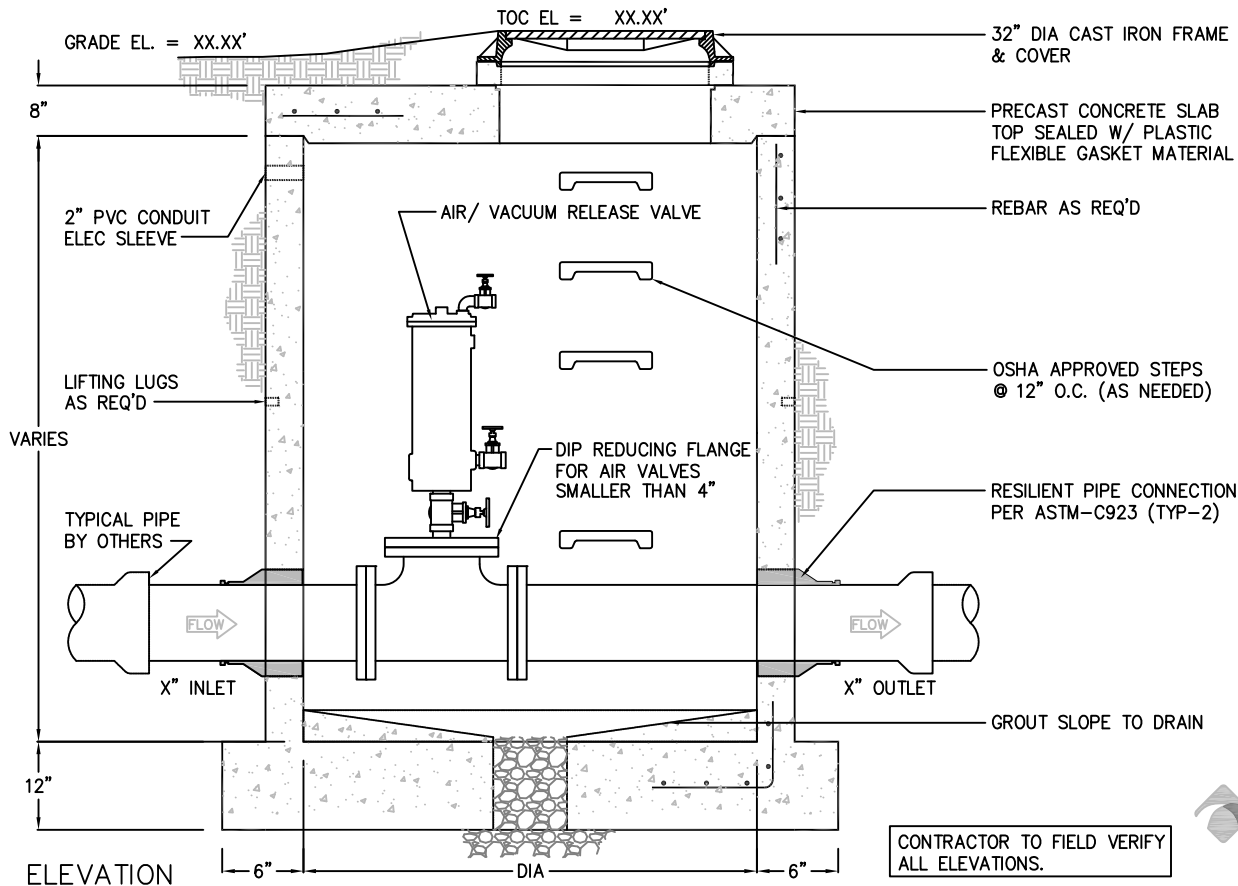


NAMEPLATE INDICATING:
MFG: ParkUSA
888-611-PARK
WWW.PARK-USA.COM
MODEL: ARV
DATE MANUFACTURED



MODEL	MAX FORCE MAIN DIA	DIA
ARV-5	8"	5'-0"
ARV-6	16"	6'-0"
ARV-8	36"	8'-0"



© Park 2015

Specifications

- CONCRETE :** Class I/II concrete with design strength of 4500 PSI at 28 days. Unit is of monolithic construction at floor, first stage of wall and baffle with sectional riser to required depth.
- REINFORCEMENT:** Grade 60 reinforced with steel rebar conforming to ASTM A615 on required centers or equal. Structural design is based on AASHTO HS-20 loading.
- ACCESS COVER:** Manhole frames, covers or grates are manufactured of grey cast iron conforming to ASTM A48-76 Class 35. Manhole shall have 24 inch inside diameter and be traffic duty.

Engineering Data

Manhole Station is structurally and hydraulically engineered conforming to Uniform Plumbing Code and ASTM C-478.

Field excavation and preparation shall be completed prior to delivery of the septic tank. Use dimensional data as shown.

PROJECT :

CUSTOMER :

ENGINEER :

ARCHITECT :

ORDER # :

DATE :



AIR RELIEF VALVE ASSEMBLY MODEL ARV

PM	ENG	DRN	DWG. NO.	REV.
DATE	05/15		ARV-2	A